

SAVERY LIBRARY  
TALLADEGA COLLEGE

CATALOGUE

—OF—

TALLADEGA COLLEGE

TALLADEGA, ALABAMA.

1890-1.

CATALOGUE  
OF THE  
OFFICERS AND STUDENTS  
OF  
TALLADEGA COLLEGE,

TALLADEGA, ALABAMA,

WITH A

Statement of the Courses of Study, Expenses, etc.

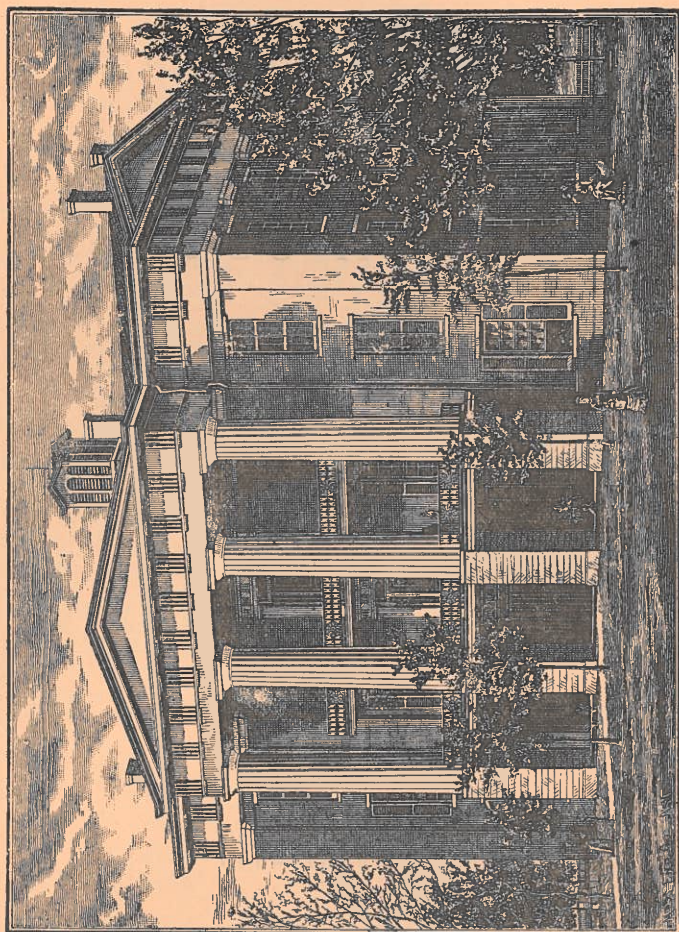
FOR THE SCHOLASTIC YEAR, 1890-1.



Founded in 1867 by the American Missionary Association. Char-  
tered as a College in 1869.



TALLADEGA, ALA. :  
PRESS OF OUR MOUNTAIN HOME.  
1891.



SWAYNE HALL.

## CALENDAR.

SESSION 1891—1892.

The Fall Term begins . . . Tuesday, September 29, 1891.  
The Fall Term ends . . . Thursday, December 24, 1891.  
The Winter Term begins . . . Saturday, January 2, 1892.  
The Winter Term ends . . . Thursday, March 27, 1892.  
The Spring Term begins . . . Saturday, April 2, 1892.  
The Spring Term ends . . . Thursday, June 9, 1892.

## COMMENCEMENT WEEK, 1892.

BEGINS, Sunday Morning, June 5.      ENDS, Thursday Night, June 9.

*Baccalaureate Sermon*, Sabbath Morning.  
*Missionary Sermon*, Sabbath Evening.  
*Examinations*, . . . Monday, Tuesday & Wednesday A. M.  
*Monday Night*, . . . Public Exercises, Literary Societies.  
*Tuesday Night*, . . . Address before the Societies.  
*Wednesday Afternoon*, Prize Speaking.  
*Wednesday Night*, . . . Church Prayer Meeting.  
*Thursday Morning*, . . . Graduating Exercises.

## BOARD OF TRUSTEES.

H. W. HUBBARD, Esq., . . . . . New York, N. Y.  
R. H. ISBELL, Esq., . . . . . Talladega.  
REV. M. E. STRIEBY, D. D., . . . . . New York, N. Y.  
REV. A. F. BEARD, D. D., . . . . . New York, N. Y.  
HON. L. E. PARSONS, . . . . . Talladega.  
REV. W. H. WARD, D. D., . . . . . New York, N. Y.  
REV. G. W. ANDREWS, D. D., . . . . . Talladega.  
REV. H. S. DEFOREST, D. D., . . . . . Talladega.  
REV. JAMES W. COOPER, D. D., . . . . . New Britain, Conn.

## EXAMINING COMMITTEE.

APPOINTED BY THE ALABAMA CONGREGATIONAL ASSOCIATION.

REV. W. J. LARKIN, . . . . . Marion.  
REV. J. S. JACKSON, . . . . . Montgomery.  
REV. J. B. GRANT, . . . . . Jenifer.

## FACULTY.

REV. HENRY S. DEFOREST, D. D., PRESIDENT,  
Mental and Moral Philosophy.  
REV. GEORGE W. ANDREWS, D. D.,\*  
REV. JOHN R. HERRICK, S. T. D.,  
Instructors in Theology.  
REV. A. T. BURNELL, A. M., PH. D., PRINCIPAL,  
Higher Mathematics and Rhetoric.  
HENRY F. ELLINWOOD, A. B.,  
Latin and Greek.  
EDWIN C. SILSBY,  
Secretary and Treasurer.  
GEORGE WILLIAMSON,  
Superintendent in Mechanics.  
EDGAR A. BISHOP, B. S.,  
Superintendent of Agricultural Department.  
MISS MAY L. PHILLIPS,  
Mathematics, History and English Literature.  
MISS CAROLINE E. WHEELER,  
School Economy, Methods, and Critic Teacher in Practice Department.  
MISS E. JENNIE PECK, (two terms.)  
MISS ELLA C. ABBOTT, (one term.)  
Grammar, Arithmetic, Reading, Drawing in Grammar Grades.  
MISS JENNIE A. AINSWORTH,  
Geography, History, and Elementary Sciences in Grammar Grades.  
MISS CARRIE E. PARKHURST,  
Fourth and Fifth Grades in Cassedy School.  
MISS CARRIE B. CHAMBERLAIN,  
Third Grade in Cassedy School.  
MISS CICELY SAVERY,  
Second Grade in Cassedy School.  
MISS SUSIE SANDS, A. B.,  
First Grade in Cassedy School.  
MISS JESSIE O. HART,  
MISS HELEN C. HOVEY,  
Vocal and Instrumental Music.  
MISS S. J. ELDER,  
Assistant to Treasurer and Teacher of Night School.  
MISS ADDIE B. CHALFANT,  
Sewing and Nursing.  
MISS ALICE F. TOPPING,  
Preceptress, and Matron of Foster Hall.  
MRS. MARY A. BURNELL,  
Matron of Stone Hall.

\* Abroad last half of the year.

GRADUATES.

The College desires to keep a permanent record of its Graduates. The following is such a list, together with their occupation and location as far as they are known. Any change in name, profession or address, should be reported at once to the President.

THEOLOGICAL DEPARTMENT.

Name.	Occupation.	Location
1877.		
Thornton T. Benson, . . .	Pastor, . . .	Goliad, Texas.
Wyatt Fuller, . . . . .	— . . . .	Michigan City, Miss.
Alfred Jones, . . . . .	— . . . .	Sylacauga.
1878.		
John David Smith, . . . .	— . . . .	Chicago, Illinois.
1879.		
Andrew Jackson Headen, .	Teacher, . . .	Talladega.
Henry S. Williams, . . . .	Pastor, . . . .	Athens.
Preston W. Young, . . . .	Teacher, . . .	San Mateo, Florida.
1880.		
*Henry Walter Conley.		
John Barbour Grant, . . . .	Pastor, . . . .	Jenifer.
Byron Gunner, B. D., . . . .	Pastor, . . . .	Lexington, Ky.
Peter J. McEntosh, . . . .	Pastor, . . . .	San Francisco, Cal.
Joseph William Roberts, . .	Pastor, . . . .	McAlister, Ind. Ter.
John Richard Sims, . . . .	Pastor, . . . .	Shelby.
Yancy Benjamin Sims, . . . .	Pastor, . . . .	Little Rock, Ark.
John Wesley Strong, . . . .	Pastor, . . . .	Corpus Christi, Tex.
1884.		
John Rufus McLean, . . . .	Pastor, . . . .	Macon, Georgia.
Fountain Gage Ragland, . . .	Pastor, . . . .	Mobile.
Spencer Snell, B. D., . . . .	Pastor, . . . .	Birmingham.
1886.		
†Horace Leavitt Bradford, B. D.	Teacher, . . .	Talladega.
Lorenzo Dow Cunningham, . .	Teacher, . . .	Talladega.
‡Sidney Hamilton Dale.		

\* Died in Anniston, March 21, 1891. | † Died in Talladega, April 16, 1891.  
 ‡ Died in Florence, June 18, 1887.

Name. Occupation. Location.

1887.		
Washington P. Hamilton, . .	Pastor, . . .	Childersburg.
James A. Jones, . . . . .	Pastor, . . .	Cypress Slash, Ga.
1889.		
James Brown, . . . . .	Pastor, . . .	Anniston.
Mark Richard Carlisle, B. D.	Pastor, . . .	Dodd City, Texas.
Joseph Samuel Jackson, B. D.	Pastor, . . .	Montgomery.
Samuel Austin Rivers, . . . .	Pastor, . . .	Talladega.
Felix Rice Sims, B. D., . . . .	Pastor, . . .	McIntosh, Georgia.
1890.		
Augustus Allen Battle, Pastor and Teacher,		Talladega.
John Madison Roan, . . . . .	Pastor, . . .	Savannah, Georgia.

NORMAL DEPARTMENT.

Name. Occupation. Location.

1876.		
Lewis W. Cummins, . . . . .	— . . . .	Chicago, Illinois.
Ambrose B. Headen, . . . . .	Teacher, . . .	Birmingham.
Daniel Leathers, . . . . .	Teacher, . . .	Helena, Texas.
John Richard Sims, . . . . .	Pastor, . . . .	Shelby.
*Samuel B. White.		
Marietta G. Hardwick, [Mrs. J. G. Ish.]		Little Rock, Ark.
Hattie S. Smith, [Mrs. G. L. Jackson,]		Nashville, Tenn.
1878.		
Andrew Jackson Headen, . . .	Teacher, . . .	Talladega.
John David Smith, . . . . .	— . . . .	Chicago, Illinois.
George Augustus White, . . . .	— . . . .	Fort Snelling, Minn.
Nannie Hedden, . . . . .	Teacher, . . .	Talladega County.
Janette Irene Isbell, [Mrs. S. L. Wilson,]		Talladega.
1879.		
Burton H. Hudson, . . . . .	Merchant, . . .	Birmingham.
Yancy Benjamin Sims, . . . . .	Pastor, . . . .	Little Rock, Ark.
Preston W. Young, . . . . .	Teacher, . . .	San Mateo, Florida.
Sarah Helen Duff, [Mrs. B. F. Foster,]		Topeka, Kansas.
Daisy M. Hardwick, [Mrs. L. L. Wilson,]		Jenifer.
Pink Virginia Jones, [Mrs. H. W. Conley,]		Anniston.
1881.		
†Henry Walter Conley.		
Samuel Jackson Sims, . . . . .	Teacher, . . .	Selma.
1884.		
‡Horace Leavitt Bradford.		
Alexander Allison Peters, . .	Teacher, . . .	Shelby.
Fountain Gage Ragland, . . . .	Pastor, . . . .	Mobile.
Spencer Snell, B. D., . . . . .	Pastor, . . . .	Birmingham.
Nathan Benj. Young, § . . . . .	Teacher, . . .	Birmingham.

\* Died in Paris, Texas, Aug. 23, 1881. | † Died in Talladega, April 16, 1891.  
 ‡ Died in Anniston, March 21, 1891. | § A. B. Oberlin College, 1888.

Name	Occupation	Location
1885.		
Dorcas Mary White, [Mrs. E. J. Crabb,]		Tuscaloosa.
1886.		
Mark Richard Carlisle, B. D.	Pastor, . . .	Dodd City, Texas.
Martha Roberta Child, . . .	Teacher, . . .	Chattanooga, Tenn.
Adelaide Cruikshank, [Mrs. James Brown,]		Anniston.
*Sidney Hamilton Dale.		
Lucy Jones Gantt, . . . . .	Teacher, . . .	Birmingham.
Alva Curtis Garrott, . . . . .	Pension Office,	Washington, D. C.
Lillie Annie Jones, [Mrs. A. N. Johnson,]		Mobile.
Mary Eliza Savery, [Mrs. Wm. Youngblood,]		Terrell, Texas.
Felix Rice Sims, B. D., . . . . .	Pastor, . . .	McIntosh, Georgia.
Jackson E. Tidmus Todd, . . . . .	Teacher, . . .	Furman.
1887.		
Ella Mary Allen, . . . . .	Teacher, . . .	Birmingham.
Annie Eliza Bell, . . . . .	Teacher, . . .	Birmingham.
Paul Bledsoe, . . . . .	Teacher, . . .	Laredo, Texas.
Charles Roby Boswell, . . . . .	Teacher, . . .	Groesbeck, Texas.
Agnes M. Bradford, . . . . .	Teacher, . . .	Chattanooga, Tenn.
†Allen Ferris Feaster.		
Richard Dawson Jennings, . . . . .	Student, . . .	Oberlin Theo. Sem.
Henry Emiles Levi, . . . . .	Teacher, . . .	Sylacauga.
Ernest Frank McCarroll, . . . . .	Teacher, . . .	Shelby.
Katie Randolph, [Mrs. J. I. Donaldson,]		Talladega.
Cicely Savery, . . . . .	Teacher, . . .	Talladega.
‡Jerutha Elvira Williamson.		
William Esin Youngblood, . . . . .	Teacher, . . .	Terrell, Texas.
1888.		
Frank Edmond Abercrombie, . . . . .	Teacher, . . .	Opelika.
Augustus Allen Battle, . . . . .	Pastor and Teacher,	Talladega.
Geo. Washington Braxdall, Jr. . . . .	Teacher, . . .	Talladega County.
Nellie Leonard Childs, . . . . .	Teacher, . . .	Birmingham.
Annie Dell Harrison, [Mrs. Paul Bledsoe,]		Laredo, Texas.
James Abbliss Jones, . . . . .	Pastor, . . .	Cypress Slash, Ga.
Susie Anna Minter, . . . . .	Teacher, . . .	Selma.
1889.		
Thomas Wilbur Allen, . . . . .	Student, . . .	Oberlin College.
Mary Magdalene Gardner, . . . . .	Teacher, . . .	Birmingham.
Beverly Lillard, . . . . .	Teacher, . . .	So. Pittsburg, Tenn.
Annie Laurie Sims, . . . . .	Teacher, . . .	Silver Run.
Alfred Alfin Todd, . . . . .	Teacher, . . .	Blocton.
Alice Bertha White, . . . . .	Teacher, . . .	Birmingham.
1890.		
Ulysses Simpson Jones, . . . . .	Teacher, . . .	Camp Hill.
John Madison Roan, . . . . .	Pastor, . . .	Savannah, Ga.
John Reuben Savage, . . . . .	Teacher, . . .	Opelika.
Henry James Walker, . . . . .	Teacher, . . .	Dayton.

\* Died in Florence, June 18, 1887. | † Died in Anniston, Oct. 16, 18  
 ‡ Died in Talladega, Aug. 17, 1890.

## STUDENTS.

### THEOLOGICAL COURSE.

#### SENIOR CLASS.

Zachariah Jones, . . . . .	Mobile.
Abraham Simmons, . . . . .	Charleston, So. Car.
Ellis Ewell Sims, . . . . .	Dodd City, Texas.

#### MIDDLE CLASS.

Ward David Newkirk, . . . . .	Wilmington, No. Car.
Mrs. Ella Nora Jefferson Sims, . . . . .	Dodd City, Texas.

#### JUNIOR CLASS.

Manuel Liston Baldwin, . . . . .	Nalls, No. Carolina.
John Isaiah Donaldson, . . . . .	Paris, Texas.
James Pleasant Sims, . . . . .	Paris, Texas.
Mrs. Annie M. Sims, . . . . .	Paris, Texas.

### COLLEGE PREPARATORY COURSE.

#### THIRD YEAR.

Lee DeForest, . . . . .	Talladega.
Lillie C. DeJarnette, . . . . .	Montgomery.
Eliza A. Jones, . . . . .	Selma.
Zachariah Jones, . . . . .	Mobile.
Ward D. Newkirk, . . . . .	Wilmington, No. Car.
Ellis E. Sims, . . . . .	Dodd City, Texas.
James P. Sims, . . . . .	Paris, Texas.

#### SECOND YEAR.

John I. Donaldson, . . . . .	Paris, Texas.
Teana Kidd, . . . . .	Talladega.

## FIRST YEAR.

Peter H. Allen, . . . . .	Selma.
C. Fannie Blount, . . . . .	Wilmington, No. Car.
Hattie E. Bowman, . . . . .	Wilmington, No. Car.
Katie D. Dothard, . . . . .	Gadsden.
Osceola T. Frazier, . . . . .	Selma.
Lulu Jenkins, . . . . .	Wilmington, No. Car.
James A. Merriman, . . . . .	Selma.
Louie Severy, . . . . .	Talladega.
Josephine Savery, . . . . .	Talladega.
Julia Snell, . . . . .	Birmingham.
George A. Weaver, . . . . .	Tuscaloosa.

## NORMAL COURSE.

## SENIOR CLASS. (TWELFTH YEAR.)

Lucy Annie Austin, . . . . .	Montgomery.
Lillie C. DeJarnette, . . . . .	Montgomery.
Plenty Leonidas Jenkins, . . . . .	Silver Run.
Eliza Annie Jones, . . . . .	Selma.
Zachariah Jones, . . . . .	Mobile.
James Anthony Merriman, . . . . .	Selma.
Prince Oliver Wailes, . . . . .	Bayou Goula, La.

## JUNIOR CLASS. (ELEVENTH YEAR.)

Peter Hannibal Allen, . . . . .	Selma.
Hattie Elizabeth Bowman, . . . . .	Wilmington, No. Car.
C. Fannie Blount, . . . . .	Wilmington, No. Car.
Lee DeForest, . . . . .	Talladega.
John Isaiah Donaldson, . . . . .	Paris, Texas.
Lulu Jenkins, . . . . .	Wilmington, No. Car.
Teana Kidd, . . . . .	Talladega.
George Augustus Weaver, . . . . .	Tuscaloosa.

## SECOND YEAR. (TENTH OF COURSE.)

Amanda Alice Baker, . . . . .	Pinckneyville.
Katie Doris Dothard, . . . . .	Gadsden.
Osceola Tanner Frazier, . . . . .	Selma.
Irene Owens, . . . . .	Ensley City.
Julia Snell, . . . . .	Birmingham.

## FIRST YEAR. (NINTH OF COURSE.)

William Henry Brown, . . . . .	Hot Spur.
Warren Augustus Boswell, . . . . .	Talladega.
Samuel Tilden Bush, . . . . .	Singleton.
Concie Lee Butler, . . . . .	Wilsonville.
Walter Thomas Curry, . . . . .	Talladega.

Alice Thomas Gray, . . . . .	Talladega.
David Jenkins, . . . . .	Talladega.
Susie Jones, . . . . .	Anniston.
Mary Augusta Myatt, . . . . .	Selma.
Josephine Savery, . . . . .	Talladega.
Louie Savery, . . . . .	Talladega.

## SPECIAL.

Abraham Simmons, . . . . .	Charleston, S. C.
----------------------------	-------------------

## GRAMMAR COURSE.

## EIGHTH GRADE.

Manuel Liston Baldwin, . . . . .	Nalls, N. C.
Maggie Marguerite Bradford, . . . . .	Talladega.
James Herman Caperton, . . . . .	Talladega.
Albert John Davis, . . . . .	Beaufort, N. C.
Louise Martha Johnson, . . . . .	Talladega.
Robert Franklin Lee, . . . . .	Singleton.
Rufus Columbus Nunn, . . . . .	Rockdale.
Lucy Willis Parker, . . . . .	Marion.
Charles C. Pollard, . . . . .	Beaufort, N. C.
Mary Jane Prince, . . . . .	Talladega.
Mattie Anaugusta Wallace, . . . . .	Wilsonville.
Nellie Ann Weaver, . . . . .	Tuscaloosa.
Samuel Daniel Wilson, . . . . .	Tuscaloosa.
Hugh Sherman Woods, . . . . .	Brierfield.

## SEVENTH GRADE,

Samuel J. Barnes, . . . . .	Selma.
Beulah Benton Barton, . . . . .	Talladega.
Thomas Courtney Black, . . . . .	White Plains.
William Henry Brummit, . . . . .	Camp Hill.
Moses William Bush, . . . . .	Singleton.
Lucy Ann Bush, . . . . .	Singleton.
Robert Alexander Clarke, . . . . .	Newberne.
Charles Mills DeForest, . . . . .	Talladega.
James Darius Dillard, . . . . .	Pinckneyville.
Robert Brown Edison, . . . . .	Goodwater.
Anna Eliza Ewing, . . . . .	Florence.
Beatrice Fitzpatrick, . . . . .	Anniston.
Robert Fullwood, . . . . .	Oakbowery.
Russell Dunwoody Golding, . . . . .	McIntosh, Georgia.
Eudora Gomez, . . . . .	Talladega.
Carrie Eunice Hadnot, . . . . .	Montevallo.
James H. Heath, . . . . .	Vincent.
Joseph S. Hilburn, . . . . .	Petty, Texas.
Alice Jane Hunter, . . . . .	Selma.
Jennie Roberta Jenkins, . . . . .	Talladega.
Jennie Estelle Jenkins, . . . . .	Talladega.

Marietta Georgia Kidd,	Talladega.
M'ra Bessie Kidd,	Talladega.
Thomas Abram McLeod,	Wilsonville.
Eliza Carrie Oliver,	Marion.
Hattie Silsby,	Talladega.
Lulu Simmons,	Talladega.
Thomas Slaughter,	Judson.
Colonel Bailey Tyson,	Rhodes' Store, Fla.
Maggie Eustace White,	Tuscaloosa.
Willie Luke White,	Talladega.
Annie Belle Williams,	Jacksonville.
Thomas Plowman White,	Talladega.

## SIXTH GRADE.

Holsey L. Allen,	Talladega.
Mary Alice Brown,	Hatchett Creek.
Laura Battle,	Hurtsboro.
Jesse Henry Cobb,	Talladega.
Annie M. Cruikshank,	Talladega.
Vernona Lee Glass,	Montgomery.
Leila Gomez,	Talladega.
Hudson B. Hardwick,	Talladega.
Eva Lura Hendricks,	Jenifer.
Rosa Etta Jennings,	Harpersville.
Lena Belle Johnson,	Birmingham.
Wade Anthony Jones,	Vincent.
Annie Dallia Jones,	Talladega.
James K. P. Kidd,	Vincent.
Joseph Lawrence,	Americus, Georgia.
Josie Ligon,	Montgomery.
William Mallory Oden,	Sylacauga.
Nettie Jane Penn,	Talladega.
Amelia H. Peters,	Birmingham.
Carrie Madolian Phifer,	Birmingham.
William Marcus Rakestraw,	Furman.
Ella Willie Rivers,	Talladega.
Benjamin Roberts,	King's Mount'n, N.C.
Susie Ida Rollins,	Talladega.
Mary Eliza Rutledge,	Talladega.
Mary Frances Rutledge,	Montgomery.
Henry Savery,	Talladega.
Calvin A. Sawyer,	Talladega.
Mrs. J. P. Sims,	Paris, Tenn.
William Simon Smith,	Sandy Creek.
Willie B. Smith,	Talladega.
Mary E. Smyly,	Pleasant Hill.
Susie Etta Walker,	Montgomery.
Irene Beatrice Waller,	Selma.
Gertrude May Waller,	Selma.
Fanny White,	Talladega.
Mary Myrtle White,	Talladega.
Ary Mittie Worthington,	Cropwell.
Pinckney W. Wood,	Lock Three.

## INTERMEDIATE COURSE.

## FIFTH GRADE.

Garland E. Avis,	Selma.
Jasper P. Battle,	Cowikee.
Wallace A. Battle,	Hurtsboro.
William Borden,	Wilsonville.
James R. Brockman,	White Plains.
Charles B. Brooks,	Camp Hill.
Rachel E. Brown,	Creswell.
Samuel Cameron,	Talladega.
Nelson N. Carmichael,	Mount Meadow.
Savilla Chapman,	Rendalia.
Emma J. Cook,	Sylacauga.
Thomas N. Cowen,	Kirk's Grove.
John W. Curry,	Talladega.
Laura Dargin,	Talladega.
Reuben D. Dillard,	Pinckneyville.
Mattie A. Edwards,	Singleton.
Charles Flag,	Montgomery.
Henry C. Freeze,	Renfroe.
Ethel S. Gardner,	Selma.
Clara E. Garrett,	Talladega.
Robert Gover,	Jenifer.
Robert Green,	Pekin, N. Carolina.
Bertha Gresham,	Benton.
Alexander Hardie,	Childersburg.
Lizzie Hart,	Birmingham.
Annie R. Jones,	Eastaboga.
John Jones,	Talladega.
Lizzie J. Lawler,	Talladega.
George W. Lee,	Montgomery.
Mattie H. Lewis,	Talladega.
Henry Lewis,	Rockford.
Mallie Mandeville,	Singleton.
James A. McMillan,	Talladega.
Ella G. Morris,	Talladega.
George Moss,	Vincent.
Margaret C. Patterson,	Goodwater.
Irene M. Penn,	Talladega.
Emma Robinson,	Wilsonville.
James H. Sims,	Talladega.
Thomas B. Stevens,	Anniston.
Rena Swain,	Birmingham.
Estella L. Taylor,	Talladega.
Albert S. White,	Talladega.
Mary J. White,	Columbiana.

## FOURTH GRADE.

Annie Abrams,	Vincent.
Thomas F. Arnold,	Beaver Valley.
Henrietta H. Barclay,	Talladega.
Jennette A. Battle,	Hurtsboro.



Ellis H. Bingham, . . . . .	Talladega.
Emma L. Braxdall, . . . . .	Talladega.
Mary M. Braxdall, . . . . .	Talladega.
Cora Butler, . . . . .	Talladega.
Minnie Caldwell, . . . . .	Anniston.
William B Cobb, . . . . .	Talladega.
Kate Colly, . . . . .	Talladega.
Melissa Crawley, . . . . .	Rockdale.
Robert W. Crawley, . . . . .	Rockdale.
Hattie Crocheron, . . . . .	Talladega.
Jessie Cunningham, . . . . .	Talladega.
Mary Cunningham, . . . . .	Talladega.
Robert Cunningham, . . . . .	Talladega.
Sadie Cunningham, . . . . .	Talladega.
Isabella Elston, . . . . .	Talladega.
Ada L. Gilmer, . . . . .	Rock Run.
Mary L. Gomez, . . . . .	Talladega.
Ella M. A. Haynes, . . . . .	Lynchburg, Virginia.
Bessie Headen, . . . . .	Talladega.
Hannah Hill, . . . . .	Talladega.
Lucinda Hood, . . . . .	Vandiver.
Lela L. Hooks, . . . . .	Thomas Furnace.
Lawson Hunley, . . . . .	Jenifer.
Curry M. Jackson, . . . . .	Talladega.
Robert Johnson, . . . . .	Ironaton.
Nettie Kidd, . . . . .	Talladega.
Willie Lee, . . . . .	Jenifer.
Hannah Mallory, . . . . .	Kymulga.
Lucy E. Matthews, . . . . .	Mobile.
Lila B. McAlpine, . . . . .	Talladega.
John W. McAlpine, . . . . .	Talladega.
Oliver F. McNair, . . . . .	Talladega.
Ida M. McPherson, . . . . .	Childersburg.
Josie McTyeire, . . . . .	Talladega.
James Montgomery, . . . . .	Talladega.
Paul Noble, . . . . .	Rhodes' Store, Fla.
Ella Phillips, . . . . .	Talladega.
Robert Pinkard, . . . . .	Milltown.
Mary Rivers, . . . . .	Talladega.
Katie L. Savery, . . . . .	Talladega.
Hannah B. Scott, . . . . .	Talladega.
Martha M. Scott, . . . . .	Talladega.
Anna R. Simmons, . . . . .	Talladega.
Lawrence A. Simmons, . . . . .	Talladega.
Willie Simmons, . . . . .	Talladega.
William A. Sims, . . . . .	Talladega.
Agnes C. Story, . . . . .	Talladega.
Walker Story, . . . . .	Talladega.
Lizzie M. Timmons, . . . . .	Birmingham.
Alice Towns, . . . . .	Talladega.
Viola Truss, . . . . .	Lincoln.
Governor Turner, . . . . .	Talladega.
Evielee Vandegrift, . . . . .	Branchville.
Mollie Walters, . . . . .	Talladega.
Elvira Watkins, . . . . .	Talladega.
Cornelius Williamson, . . . . .	Talladega.
Carrie E. Williamson, . . . . .	Wilsonville.

Grant Wilson, . . . . .	Talladega.
Ladie Yeomans, . . . . .	Sylacauga.
Millie Youngblood, . . . . .	Childersburg.

## THIRD GRADE.

Andrews Colton, . . . . .	Allenton.
Malaney Austin, . . . . .	Birmingham.
Celia Barclay, . . . . .	Talladega.
Paralee Barclay, . . . . .	Talladega.
Dovie Bagley, . . . . .	Talladega.
Burton Barker, . . . . .	Ashland.
Jesse Bibb, . . . . .	Talladega.
Parthena Brown, . . . . .	Talladega.
Laura Bush, . . . . .	Singleton.
George Chandler, . . . . .	Talladega.
John Cook, . . . . .	Sylacauga.
Bruce Cobb, . . . . .	Talladega.
George Cobb, . . . . .	Talladega.
Alice Cunningham, . . . . .	Talladega.
William Cunningham, . . . . .	Talladega.
Wallace Cunningham, . . . . .	Talladega.
Ella Curry, . . . . .	Talladega.
Samuel Curry, . . . . .	Talladega.
Hettie Darby, . . . . .	Talladega.
Daniel Easley, . . . . .	Renfroe.
Freeman Edison, . . . . .	Good Water.
Samuel Fane, . . . . .	Talladega.
Zada Foreman, . . . . .	Talladega.
Ada Garrett, . . . . .	Talladega.
James Gibson, . . . . .	Millerville.
Columbus Green, . . . . .	Dry Creek, N. Car.
Lulu Groce, . . . . .	Ironaton.
Cornelius Hill, . . . . .	Talladega.
C. Wade Hart, . . . . .	Alexander City.
Thomas Jenkins, . . . . .	Talladega.
Cora Johnson, . . . . .	Tecumseh.
Della Johnson, . . . . .	Talladega.
Fannie Johnson, . . . . .	Talladega.
Seppie Jones, . . . . .	Talladega.
Lena Keith, . . . . .	Talladega.
Allen Kirby, . . . . .	Kirk's Grove.
Anna Mason, . . . . .	Talladega.
Alberta McAlpine, . . . . .	Talladega.
Rosa McAlpine, . . . . .	Talladega.
Estelle McAlpine, . . . . .	Talladega.
Essie McNair, . . . . .	Talladega.
Gus McClellan, . . . . .	Talladega.
Charles McClellan, . . . . .	Talladega.
Roulia McPherson, . . . . .	Childersburg.
Mary Mellender, . . . . .	Talladega.
Maggie Mellender, . . . . .	Talladega.
John McLeod, . . . . .	Wilsonville.
Alice Morris, . . . . .	Talladega.
Henry Morris, . . . . .	Talladega.
Thella Morris, . . . . .	Talladega.

Cora Moore, . . . . .	Brierfield.
Rosa Miles, . . . . .	Thomas.
Zella Orr, . . . . .	Talladega.
Amanda Rollins, . . . . .	Talladega.
Albert Ragland, . . . . .	Talladega.
James Ragland, . . . . .	Talladega.
Evangeline Sims, . . . . .	Talladega.
Cora Simmons, . . . . .	Childersburg.
Joanna Sommerville, . . . . .	Talladega.
Hugh Storey, . . . . .	Talladega.
Winfred Taylor, . . . . .	Talladega.
Bertha Terry, . . . . .	Talladega.
Henry Terrell, . . . . .	Alpine.
Arthur Tedford, . . . . .	Talladega.
Mattie Todd, . . . . .	Talladega.
Willie Tucker, . . . . .	Ironaton.
Oscar Tucker, . . . . .	Ironaton.
Dora Warwick, . . . . .	Talladega.
Ida Warwick, . . . . .	Talladega.
Rosabell Webb, . . . . .	Birmingham.
Alice White, . . . . .	Alpine.
William Williams, . . . . .	Talladega.
Henry Wilson, . . . . .	Talladega.
Thomas Wilson, . . . . .	Talladega.
Agrippa Wheat, . . . . .	Talladega.
Cæsar Wheat, . . . . .	Talladega.
James Woodruff, . . . . .	White Plains.

## PRIMARY COURSE.

## SECOND GRADE.

Willie Allen, . . . . .	Talladega.
Willie Barclay, . . . . .	Talladega.
Lena Barclay, . . . . .	Talladega.
Rachel Barclay, . . . . .	Talladega.
Pinkey Barclay, . . . . .	Talladega.
Annie Barclay, . . . . .	Talladega.
Isadore Baker, . . . . .	Talladega.
Neal Baker, . . . . .	Talladega.
James Bonner, . . . . .	Talladega.
Rosa Bonner, . . . . .	Talladega.
Minnie Bradford, . . . . .	Talladega.
Greene Broaden, . . . . .	Talladega.
Laura Brown, . . . . .	Hatchett Creek.
Martie Bibb, . . . . .	Talladega.
Eddie Brown, . . . . .	Talladega.
Fannie Bolden, . . . . .	Talladega.
Anna Burt, . . . . .	Talladega.
Josie Bowie, . . . . .	Talladega.
Easter Champion, . . . . .	Talladega.
Febbie Chapman, . . . . .	Carlton.
Mary Curry, . . . . .	Talladega.
Eddie Calhoun, . . . . .	Talladega.

Eddie Cobb, . . . . .	Talladega.
Allie Cunningham, . . . . .	Talladega.
Fred Cunningham, . . . . .	Talladega.
Susie Carter, . . . . .	Lock Three.
Hattie Draper, . . . . .	Talladega.
Emma Duncan, . . . . .	Talladega.
Annie Gamble, . . . . .	Jenifer.
Hattie Garrett, . . . . .	Talladega.
Emma Huey, . . . . .	Talladega.
Oscar Huey, . . . . .	Talladega.
Hugh Hall, . . . . .	Talladega.
Julia Headen, . . . . .	Talladega.
Missouri Holman, . . . . .	Rendalia.
Lizzie Isbell, . . . . .	Talladega.
Malinda Jones, . . . . .	Talladega.
Elisha Jones, . . . . .	Talladega.
Richard Jones, . . . . .	Talladega.
Lillie Jemison, . . . . .	Talladega.
Katie Jemison, . . . . .	Talladega.
Arthur Lawler, . . . . .	Talladega.
Emma Mason, . . . . .	Talladega.
Sadelia Montgomery, . . . . .	Talladega.
Cora Mitchell, . . . . .	Talladega.
Earnest McAlpine, . . . . .	Talladega.
Hamilton McAlpine, . . . . .	Talladega.
Thula McGregory, . . . . .	Talladega.
Fannie McTyeire, . . . . .	Talladega.
Mittie McAlpine, . . . . .	Renfroe.
Greene Moore, . . . . .	Talladega.
Emma Matthews, . . . . .	Alexander City.
Stiles Orr, . . . . .	Talladega.
Ophelia Penn, . . . . .	Talladega.
Albert Patterson, . . . . .	Talladega.
Jason Ragland, . . . . .	Lincoln.
Lena Ragland, . . . . .	Talladega.
John Sims, . . . . .	Talladega.
Alberta Sims, . . . . .	Talladega.
Nancy Singly, . . . . .	Eastaboga.
Nugs Stone, . . . . .	Talladega.
Ada Stone, . . . . .	Talladega.
Lillie Belle Smith, . . . . .	Talladega.
Lulu Smoot, . . . . .	Talladega.
Ida Storey, . . . . .	Curry Station.
Hardy Tolliver, . . . . .	Talladega.
Palma Turner, . . . . .	Talladega.
Anna Thomas, . . . . .	Talladega.
Minnie Thompson, . . . . .	Hurtsboro.
George Waldon, . . . . .	Talladega.
Amanda Wilson, . . . . .	Talladega.
Rena Wilson, . . . . .	Talladega.
Nina Williams, . . . . .	Talladega.
Rachel Williamson, . . . . .	Talladega.
Samuel Wright, . . . . .	Talladega.
Leola Young, . . . . .	Talladega.

## FIRST GRADE.

Neoma Baker, . . . . .	Talladega.
Lizzie Baldwin, . . . . .	Talladega.
Felix Barclay, . . . . .	Talladega.
Fred Barclay, . . . . .	Talladega.
Arch Barclay, . . . . .	Talladega.
Willie Bingham, . . . . .	Talladega.
Hattie Boyd, . . . . .	Talladega.
Sammie Bradford, . . . . .	Talladega.
Nellie Braxdall, . . . . .	Talladega.
Daisy Braxdall, . . . . .	Talladega.
Henry Brown, . . . . .	Talladega.
Ida Brown, . . . . .	Talladega.
Eugene Burnell, . . . . .	Talladega.
Fanny Burt, . . . . .	Talladega.
Nona Burt, . . . . .	Talladega.
Mamie Caspar, . . . . .	Talladega.
Lula Cobb, . . . . .	Talladega.
Lila Cofield, . . . . .	Talladega.
Isora Cofield, . . . . .	Talladega.
Ada Coleman, . . . . .	Talladega.
Malinda Coleman, . . . . .	Talladega.
John Colly, . . . . .	Carlton.
Lena Colly, . . . . .	Talladega.
Rosanna Cunningham, . . . . .	Talladega.
Earl Cunningham, . . . . .	Talladega.
William Curry, . . . . .	Talladega.
Minnie Curry, . . . . .	Talladega.
Rosanna Dale, . . . . .	Talladega.
Eliza Draper, . . . . .	Talladega.
Louis Driver, . . . . .	Talladega.
John Fields, . . . . .	Talladega.
Nancy Fluker, . . . . .	Talladega.
Carrie Foster, . . . . .	Talladega.
William French, . . . . .	Talladega.
Manuel French, . . . . .	Talladega.
Rosabell Garrett, . . . . .	Talladega.
Wilber Gomez, . . . . .	Talladega.
Alice Gomez, . . . . .	Talladega.
Emma Hardwick, . . . . .	Talladega.
Arthur Hardwick, . . . . .	Talladega.
Oliver Hardwick, . . . . .	Talladega.
Mary Headen, . . . . .	Talladega.
Sallie Headen, . . . . .	Talladega.
Henry Heard, . . . . .	Talladega.
Avery Hilburn, . . . . .	Jenifer.
Woods Hill, . . . . .	Talladega.
Dorsey Huey, . . . . .	Talladega.
George Hunter, . . . . .	Talladega.
Reuben Hunter, . . . . .	Talladega.
Alberta Johnson, . . . . .	Talladega.
Lizzie Kidd, . . . . .	Talladega.
Leona Lawler, . . . . .	Talladega.
Joe Lewis, . . . . .	Talladega.
Fanny Madison, . . . . .	Talladega.
Mary Martin, . . . . .	Talladega.

Myrta Martin, . . . . .	Talladega.
Belle McClellan, . . . . .	Talladega.
Cornelius Mitchell, . . . . .	Talladega.
James Mitchell, . . . . .	Talladega.
Queen Montgomery, . . . . .	Talladega.
Julia Mulberry, . . . . .	Talladega.
Newton McAlpine, . . . . .	Talladega.
Dothula Olmstead, . . . . .	Talladega.
Alice Orr, . . . . .	Talladega.
Henry Orr, . . . . .	Talladega.
Mathew Orr, . . . . .	Talladega.
William Prince, . . . . .	Talladega.
Julian Ragland, . . . . .	Talladega.
Hattie Reynolds, . . . . .	Talladega.
Robert Rice, . . . . .	Talladega.
Ida Rivers, . . . . .	Talladega.
Florence Rollins, . . . . .	Talladega.
Andrew Savery, . . . . .	Talladega.
Junior Scott, . . . . .	Talladega.
Ethelyn Simmons, . . . . .	Talladega.
Ada Sims, . . . . .	Talladega.
Willard Sims, . . . . .	Talladega.
Ammi Sims, . . . . .	Talladega.
Anna J. Smoot, . . . . .	Talladega.
Ivy Smith, . . . . .	Mardisville.
Milton Smith, . . . . .	Talladega.
Chap Stone, . . . . .	Talladega.
Maud Stone, . . . . .	Talladega.
Samuel Stone, . . . . .	Talladega.
Elbert Swain, . . . . .	Talladega.
Clarence Terry, . . . . .	Talladega.
Lucile Terry, . . . . .	Talladega.
Magdalene Terry, . . . . .	Talladega.
Viola Turner, . . . . .	Talladega.
Isabelle Turner, . . . . .	Talladega.
Henry Walker, . . . . .	Talladega.
Sadie Walker, . . . . .	Talladega.
Hattie Warwick, . . . . .	Talladega.
Robert Welch, . . . . .	Talladega.
Gertrude White, . . . . .	Talladega.
George White, . . . . .	Talladega.
Flenoy Wilson, . . . . .	Talladega.
Edna Wilson, . . . . .	Talladega.
Louis Wilson, . . . . .	Talladega.

## TAKING INSTRUMENTAL MUSIC.

Lucy A. Austin, . . . . .	Montgomery.
Beulah B. Barton, . . . . .	Talladega.
Hattie E. Bowman, . . . . .	Wilmington, No. Car.
Lucy Bush, . . . . .	Singleton.
Katie D. Dothard, . . . . .	Gadsden.
Beatrice Fitzpatrick, . . . . .	Anniston.
Alice T. Gray, . . . . .	Talladega.

Lena B. Johnson, . . . . .	Birmingham.
Annie Jones, . . . . .	Talladega.
Eliza A. Jones, . . . . .	Selma.
Josie Ligon, . . . . .	Montgomery.
Eliza Oliver, . . . . .	Marion.
Lucy W. Parker, . . . . .	Marion.
Carrie M. Phifer, . . . . .	Birmingham.
Annie M. Sims, . . . . .	Paris, Texas.
Annie Simmons, . . . . .	Talladega.
Julia Snell, . . . . .	Birmingham.
Agnes Storey, . . . . .	Talladega.
Bertha Terry, . . . . .	Talladega.
Lizzie M. Timmons, . . . . .	Birmingham.
Nellie Weaver, . . . . .	Tuscaloosa.
Fannie White, . . . . .	Talladega.

## NIGHT SCHOOL.

Garland Avis, . . . . .	Selma.
Maria Arruda, . . . . .	Bahia, So. America.
William Baker, . . . . .	Goodwater.
Lugenia Breedlove, . . . . .	Sylacauga.
H. R. Broughton, . . . . .	Onville, N. Carolina.
Robert L. Green, . . . . .	Pekin, N. Carolina.
Alice Holman, . . . . .	Birmingham.
Virginia Howard, . . . . .	Mobile.
Clay Hall, . . . . .	Talladega.
Lila Jackson, . . . . .	Aberdeen, Miss.
Peter Jones, . . . . .	Allenton.
James K. P. Kidd, . . . . .	Vincent.
George W. Moss, . . . . .	Vincent.
Martin Minnifield, . . . . .	Oakbowery.
Henry Mackey, . . . . .	Hawkesville.
Paul Noble, . . . . .	Rhodes' Store, Fla.
Emma Robinson, . . . . .	Wilsonville.
C. H. Simons, . . . . .	Columbia, S. C.
H. B. Sterling, . . . . .	Wedowee.
Evie Vandergrift, . . . . .	Branchville.
Ella Welch, . . . . .	Talladega.
John Wilson, . . . . .	Talladega.
Ellen Wilson, . . . . .	Talladega.
Nona Young, . . . . .	Childersburg.

## SUMMARY.

	MALES.	FEMALES.	TOTALS.	
Alumni of Theological Department, . . . . .	30	0	30	
Alumni of Normal Department, . . . . .	41	25	66—	96

## ATTENDANCE, 1890—1891.

	MALES.	FEMALES.	TOTALS.	
THEOLOGICAL COURSE—				
Seniors, . . . . .	3	0	3	
Middles, . . . . .	1	1	2	
Juniors, . . . . .	3	1	4—	9
COLLEGE PREPARATORY COURSE—				
Third Year, . . . . .	5	2	7	
Second Year, . . . . .	1	1	2	
First Year, . . . . .	3	8	11—	20
NORMAL COURSE—				
Seniors, . . . . .	4	3	7	
Juniors, . . . . .	4	4	8	
Second Year, . . . . .	0	5	5	
First Year, . . . . .	6	5	11	
Special, . . . . .	1	0	1—	32
GRAMMAR COURSE—				
Eighth Grade, . . . . .	8	6	14	
Seventh Grade, . . . . .	17	16	33	
Sixth Grade, . . . . .	14	25	39—	86
INTERMEDIATE COURSE—				
Fifth Grade, . . . . .	24	20	44	
Fourth Grade, . . . . .	20	44	64	
Third Grade, . . . . .	37	40	77—	185
PRIMARY COURSE—				
Second Grade, . . . . .	27	49	76	
First Grade, . . . . .	46	53	99—	175
INSTRUMENTAL MUSIC— . . . . .	0	22	22—	22
NIGHT SCHOOL— . . . . .	14	10	24—	24
Total in all Courses, . . . . .				553
Counted in more than one Course, . . . . .				53

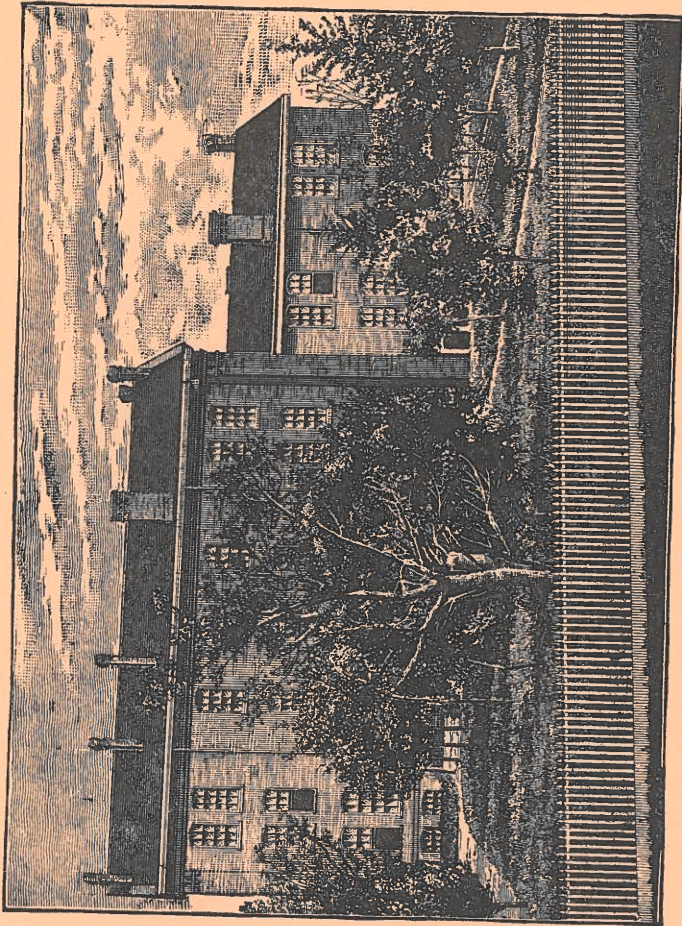
TOTAL ATTENDANCE, . . . . . 220 280 . . 500

BOARDERS, . . . . . 78 73 151

COUNTIES IN ALABAMA REPRESENTED, 25.

STATES REPRESENTED.—Alabama, Florida, Georgia, Louisiana, Mississippi, North Carolina, South Carolina, Texas, Virginia; also South America. Total, 10.

ALABAMA STUDENTS, 473; others, 27.



FOSTER HALL.

## HISTORICAL SKETCH.

The American Missionary Association began a school in Talladega twenty-four years ago. In 1867, a large and stately building, erected for college use in 1852-3, was purchased, with several acres of land, and a primary school opened that autumn with more than one hundred pupils in attendance. This building is called "Swayne Hall," in honor of General Wager Swayne, of the Freedmen's Bureau, by whom the purchase was made. In 1868, a church was organized; and in 1869, the corner stone of a girls' hall, accommodating also the boarding department, was laid, and the building named after Rev. L. Foster, of Blue Island, Illinois, a principal donor. In 1873, by the gift of Mr. R. R. Graves, of Morristown, New Jersey, a two-story wooden house and six acres of valuable land were secured for the Theological Department. Winsted Farm, of one hundred and sixty acres, less than a mile from the college buildings, was bought in 1877, mainly by Connecticut donors. The Newton Farm, of sixty acres, was added in 1887. "Stone Hall," for the use of young men, built in 1881, is the gift of Mrs. Valeria G. Stone, of Malden, Mass. The same year, the other brick Halls, Swayne and Foster, were thoroughly repaired; a new house was built for the President; and the following year two other houses, one the gift of Mr. Seth Wadhams, of Chicago were secured, and are now occupied by instructors. In 1883, by the contribution of Mr. J. H. Cassedy, of Thiels, New York, a two-story school building was erected, for Primary and Intermediate pupils, which was enlarged by a second contribution of Mr. Cassedy, in 1887. In 1884, by the aid of the "John F. Sla-

ter Fund," a shop was built, which was enlarged three years ago. Two years ago, a laundry was added, and this year two more residences for instructors, so that now the College has two school buildings, a hall for young women, another for young men, six dwellings for teachers, and facilities for teaching the industries. The property of the College, exclusive of endowments, is valued at \$115,000.

The College is Christian and Evangelical, though not sectarian. It is not a "Reform School," and none but the worthy are tolerated. It aims at thoroughness, and seeks to cultivate the hand, the head, and the heart.

## COURSES OF STUDY.

From necessity, the work of the College began with the fundamental branches, and while the higher studies have been added, the preliminary instruction has never been given more thoroughly than now. In the Cassedy School, superior advantages are afforded for Primary and Intermediate instruction. In this building, also, is the Model School, under competent and experienced teachers. Students in the Grammar and higher courses have study and class rooms in Swayne Hall. The preliminary course, of eight years, is as follows:

### PRIMARY COURSE.

#### FIRST GRADE.

READING—Reading Charts, First Reader.

NUMBERS—Count, read, and write numbers to 100. Add, subtract, multiply and divide with 1's, 2's, 3's, 4's and 5's. Use of signs.

LANGUAGE LESSONS.

OBJECT LESSONS—Oral lessons on Form, Color and Plant-Life.

WRITING—Writing script letters and words from copies, with slate and pencil.

DRAWING—On the slate. Straight lines, angles, triangles, letters formed from straight lines.

SINGING—Rote singing. The Scale, from the blackboard or music charts.

#### SECOND GRADE.

READING—Harper's Second Reader. Vowel Sounds and Markings.

SPELLING—Oral, from reading books.

NUMBERS—Idea of units and tens. Read and write numbers to 1,000. Add and subtract numbers of not more than four places. Addition, subtraction, multiplication and division tables. Roman notation to C.

LANGUAGE LESSONS.

OBJECT LESSONS—Lessons on Form and Color continued. Place terms learned. Divisions of time. Lessons on animals.

WRITING—With pencils, slate and lead. Spencerian Tracing Books.

DRAWING—Straight line work, including quadrilaterals. Dictation exercises.

SINGING—Rote singing. Scales. Simple exercises in reading and writing notes.

## INTERMEDIATE COURSE.

## THIRD GRADE.

- READING—Harper's Third Reader. Vowel sounds and markings.  
 SPELLING—Oral and written. Spelling by sound. Primary Speller.  
 NUMBERS—Read and write numbers to 1,000,000. Addition and subtraction reviewed. Multiplication and division tables and processes mastered. Idea of G. C. D. and L. C. M., and cancellation. Most common tables of Denominate Numbers. Roman notation completed.  
 GEOGRAPHY—Oral lessons in Direction and Distance. Object lessons on the immediate region, or landscape—surface, land, water, animals, vegetation, industries, etc. Use and interpretation of maps. Map-drawing of the city or county. Map of the State. Simple lessons on the globe, to give an idea of the world as a whole. Outline map of the hemispheres.  
 LANGUAGE—Language Exercises, Part 2 (Long) begun.  
 WRITING—Commence use of pen and ink. Copy-book No. 2.

## FOURTH GRADE.

- READING—Swinton's Fourth Reader.  
 SPELLING—Written work; lists from text-books. Special attention to dictation exercises.  
 ARITHMETIC—Elementary Arithmetic (White) through Fractions.  
 GEOGRAPHY—Elementary Geography (Appleton.)  
 LANGUAGE—Language Exercises, Part 2, (Long) completed.;  
 WRITING—Copy-book No. 3.

## FIFTH GRADE.

- READING—Harper's Fourth Reader.  
 SPELLING—Written, with frequent dictation exercises.  
 ARITHMETIC—Elementary Arithmetic (White) completed.  
 GEOGRAPHY—Elementary Geography (Appleton) completed.  
 LANGUAGE—How to Speak and Write (Knox.)  
 WRITING—Copy-book No. 4.  
 Lessons in Drawing and Vocal Music, regularly, through the course.

## GRAMMAR COURSE.

## SIXTH GRADE.

- READING—Swinton's Fifth Reader.  
 SPELLING—Written exercises.  
 ARITHMETIC—Complete Arithmetic (White) through U. S. Money.  
 GEOGRAPHY—Higher Geography (Appleton) begun.  
 LANGUAGE—Graded Lessons in English (Reed & Kellogg.)  
 WRITING—Copy-book No. 5.

## SEVENTH GRADE.

- READING—Swinton's Sixth Reader.  
 SPELLING—Written exercises.  
 ARITHMETIC—Complete Arithmetic (White) to Partial Payments. Mental Arithmetic, daily exercises.  
 GEOGRAPHY—Higher Geography (Appleton.) completed.  
 LANGUAGE—Higher Lessons in English (Reed & Kellogg) begun.  
 WRITING—Copy-book No. 7.

## EIGHTH GRADE.

- READING—Swinton's Sixth Reader.  
 SPELLING—Written exercises.  
 ARITHMETIC—Complete Arithmetic (White) completed and reviewed.  
 SCIENCE—Alcohol and Hygiene (Colman) Elementary Physiology (Smith.)  
 LANGUAGE—Higher Lessons in English (Reed & Kellogg) completed.  
 U. S. HISTORY—Barnes' Brief History.  
 WRITING—Copy-book No. 7.

Lessons in Drawing and Vocal Music through the course.

## NORMAL COURSE.

For admission to this Course a thorough examination must be passed in all the studies of the Seventh and Eighth Grades. Students graduating from this Course will be required to practice, under criticism, in the Model School during the Senior year. Graduates receive diplomas.

## FIRST YEAR. (NINTH YEAR OF THE COURSE.)

MATHEMATICS—Elementary Algebra (Brown.)  
 LANGUAGE—Composition and Rhetoric (Hill.)  
 NATURAL SCIENCE—Commercial Geography, one term; Physical Geography (Houston) two terms.  
 MORALS AND MANNERS—Good Morals and Gentle Manners (Gow.)  
 VOCAL MUSIC.

## SECOND YEAR. (TENTH YEAR OF THE COURSE.)

MATHEMATICS—Higher Arithmetic (Harper.) Book-keeping  
 NATURAL SCIENCE—Physiology (Hutchison.) Botany (Wood) one term.  
 LITERATURE—Seven American, and Seven British Classics.  
 DIDACTICS—School Economy (Wickersham,) and Primary Methods.  
 LATIN—Optional.  
 VOCAL MUSIC.

## JUNIOR CLASS. (ELEVENTH YEAR.)

MATHEMATICS—Plane Geometry (Wentworth) one year.  
 NATURAL SCIENCE—Physics (Houston) two terms.  
 HISTORY—General History (Barnes) one year.  
 LITERATURE—English Literature (Trimble) one term.  
 VOCAL MUSIC.

## SENIOR CLASS. (TWELFTH YEAR.)

NATURAL SCIENCE—Geology (Dana) two terms. Astronomy, (Young) one term.  
 MENTAL AND MORAL SCIENCE.  
 HISTORY—United States History (Scudder) Our Government (Macy.)  
 Practice teaching, under criticism. Review of common branches.

## COLLEGE PREPARATORY COURSE.

The requirement for admission to this Course is the thorough completion of the Grammar and First Year Normal studies.

## JUNIOR YEAR.

MATHEMATICS—Arithmetic, (Harper's Advanced.) Book-keeping.  
 LATIN—Grammar and Reader, (Harkness.)  
 LITERATURE—Seven American, and Seven British Classics.  
 NATURAL SCIENCE—Physiology, (Hutchison.)  
 VOCAL MUSIC.

## MIDDLE YEAR.

MATHEMATICS—Plane Geometry, (Wentworth.)  
 LATIN—Cæsar, with Latin Composition, (Harkness.)  
 HISTORY—General History, (Barnes.)  
 VOCAL MUSIC.

## SENIOR YEAR.

MATHEMATICS—Solid Geometry, (Wentworth.)  
 LATIN—Cicero's Orations. Latin Composition, (Harkness.)  
 HISTORY—United States, (Scudder.) Our Government, (Macy.)  
 GREEK—Inductive Method, (Harper and Waters.)

Bible Study, (Steele's Outlines.) Composition and Declamation through the Course.



## COLLEGE COURSE.

Candidates for admission to this Course must have passed through the College Preparatory Course, or its equivalent. Upon the satisfactory completion of the College Course, graduates receive the degree of Bachelor of Arts.

NOTE.—The numerals indicate the number of recitations per week.

## FRESHMAN YEAR.

FIRST TERM. LATIN—Æneid, and Latin Composition. 4.  
GREEK—Xenophon's Anabasis. 5.  
MATHEMATICS—University Algebra, (Wentworth.) 5.  
BIBLE—Studies in the Pentateuch and Biblical Geography. 1.

SECOND TERM. LATIN—Æneid, and Latin Composition. 4.  
GREEK—Xenophon, and Greek Composition. 5.  
MATHEMATICS—University Algebra. 5.  
BIBLE—Earlier Jewish History. 1.

THIRD TERM. LATIN—Cicero's De Amicitia. 4.  
GREEK—Memorabilia, and Greek Composition. 4.  
MATHEMATICS—University Algebra. 4.  
ENGLISH—Trench on Words. 2.  
BIBLE—Later Jewish History. 1.

Vocal Music, Composition and Declamation through the year.

## SOPHOMORE YEAR.

FIRST TERM. GREEK—New Testament, Gospel of Mark. 4.  
MATHEMATICS—Spherical Geometry (Wentworth.) 4.  
ENGLISH—Rhetoric. 3.  
SCIENCE—Elementary Chemistry. 3.

SECOND TERM. GREEK—New Testament, Gospel of John. 4.  
MATHEMATICS—Conic Sections. 4.  
LANGUAGE—Whitney's Life and Growth of Language. 2.  
SCIENCE—Anatomy and Hygiene (Walker.) 4.

THIRD TERM. GREEK—Acts of the Apostles. 4.  
MATHEMATICS—Trigonometry and Surveying. 4.  
LANGUAGE—Whitney's Life and Growth of Language. 2.  
SCIENCE—Botany (Gray.) 4.  
BIBLE—Studies in the Poetic and Prophetic Books of the Old Testament weekly through the year.

Vocal Music, Composition and Elocution through the year.

## JUNIOR YEAR.

FIRST TERM. GREEK—New Testament, Catholic Epistles. 4.  
LOGIC—(Hill's Jevons'.) 5.  
PHYSICS—(Snell's Olmsted) Mechanics. 5.  
BIBLE—Life of Christ. 1.

SECOND TERM. GREEK—New Testament, Epistle to the Romans. 4.  
CIVICS—Constitution of the United States, (Andrews.) 5.  
PHYSICS—Hydrostatics and Pneumatics. 5.  
BIBLE—Propagation of the Gospel. 1.

THIRD TERM. GREEK—Epistle to the Hebrews. 4.  
LAW—Business and Commercial Law. 5.  
PHYSICS—Light, Heat and Electricity. 5.  
BIBLE—Doctrines of the New Testament. 1.

Vocal Music, Essays and Orations through the year.

## SENIOR YEAR.

FIRST TERM. PSYCHOLOGY—(Haven) Intellect. 4.  
ASTRONOMY—(Young.) 4.  
POLITICAL ECONOMY—(Chapin's Wayland.) 4.  
ENGLISH LITERATURE—With readings of authors. 3.

SECOND TERM. PSYCHOLOGY—Sensibilities and Will. 4.  
ASTRONOMY.  
GEOLOGY—(Dana) begun. 4.  
INTERNATIONAL LAW—(Woolsey.) 4.  
EVIDENCES OF CHRISTIANITY—(Hopkins.) 3.

THIRD TERM. ETHICS—Theoretical and Practical, (Fairchild.) 5.  
GEOLOGY—Field work. 4.  
INTERNATIONAL LAW—3.  
EVIDENCES OF CHRISTIANITY—3.

Orations through the year.

## THEOLOGICAL COURSE.

Candidates for admission to this Course must furnish satisfactory evidence of good moral character and of such scholarship as will enable them successfully to pursue the prescribed studies. Graduates from this Course receive the degree of Bachelor of Divinity.

## JUNIOR YEAR.

INTRODUCTORY—Biblical Geography and Archæology, with Lectures, Reference Books and Maps, one term.

EXEGETICAL THEOLOGY—Messianic Prophecies; Lectures, with the use of Commentaries;—two terms. Other Prophecies, one term. Hebrew, (Elective.)

HISTORICAL THEOLOGY—1. The Patriarchal Age, from the Creation to the Exodus. 2. The Jewish Church, from the Exodus to 400 B. C. The History, Chronology, Covenants, Doctrines, and Institutions of these periods; also, Authenticity and Canonicity of the Old Testament;—two terms.

SYSTEMATIC THEOLOGY—Existence and Perfections of God; Inspiration and Divine Authority of the Bible; Trinity; Decrees; Providence; Will; Nature of Holiness; and Sin, Apostasy, Depravity and Atonement;—three terms.

## MIDDLE YEAR.

INTRODUCTORY TO THE NEW TESTAMENT—History and Formation of the Canon of the New Testament; Early Catalogues of the Canon; Manuscripts, Versions, Authenticity and Canonicity, (Mitchell's Critical Hand Book,) with Lectures;—one term.

EXEGETICAL THEOLOGY—Harmony of the Gospels; Acts of the Apostles with Exegesis.

GREEK—(Elective) three terms.

HEBREW—(Elective) one lesson each week.

HISTORICAL THEOLOGY—The Jewish Church from 400 B. C. to 70 A. D.; Planting and Training of the Christian Church from 1 to 100 A. D.;—two terms.

SYSTEMATIC THEOLOGY—Regeneration; Repentance; Justification by Faith; Perseverance of the Saints; Christian Perfection; Prayer; Eschatology; Christian Church and Positive Institutions;—three terms.

## SENIOR YEAR.

HISTORICAL THEOLOGY—The Second, Third, Fourth, Fifth, Sixth and Seventh Centuries of the Christian Church; also, the History of the Church in Mediæval and Modern Times;—one year.

EXEGETICAL THEOLOGY—Select portions of the Pauline and Catholic Epistles.

GREEK—(Elective,) two terms.

HEBREW—(Elective,) one hour each week.

HOMILETICS—General and Special Maxims of Sermonizing; Different Species of Sermons; Plan of a Sermon; Materials for the Sermons; Nature and Choice of a Text; Extempore Preaching; Matter, Manner and Spirit of Preaching; Relation of Preacher to Hearer; Style; Practice;—one year.

PASTORAL THEOLOGY—Pastoral Visiting and Catechising; Religious Character and Habits of the Pastor; His Intellectual Character and Habits; Social and Professional Character;—one term.

NOTE.—Voice Culture; Reading of Bible and Hymns; Homiletical Practice; Methods of Conducting Prayer Meetings; Missions; Benevolent Societies; Evangelistic Work; Music, one hour each week during the entire Course.

While it is desirable that the students of this Department pursue its entire Course of Study, nevertheless, at the discretion of the Faculty, a modified course may be pursued, entitling the student to a certificate, but not to a degree.

Tuition and the use of the Library are free.

Most of the students in this Department perform mission work in the surrounding country, for which they receive a small compensation, thus enabling them to continue their studies without becoming involved in debt.

The Macedonian Missionary Society, organized in 1887, meets twice a month for literary and religious purposes, and does much valuable work in the adjacent regions.

## DEPARTMENT OF METHODS AND PRACTICE.

The Department of Methods and Practice is presided over by a teacher of experience and ability. The members of the Senior Class have charge of classes in the Cassedy School, and teach daily under the supervision of their critic. It is believed that Talladega College affords facilities for the training of teachers, second to none in the South.

County Superintendents of Schools, and others desirous of obtaining teachers from this institution, will favor their own interests by so arranging the sessions of the public schools as to have them occur during our summer vacation.

Students of this institution, who by their instructors may be considered qualified for teaching, will be furnished certificates stating their qualifications and standing. As a means of protection from imposition, applicants for schools, claiming to be from Talladega College, should be required to present such certificate.

## DEPARTMENT OF MUSIC.

Excellent advantages are offered for study and drill in both Instrumental and Vocal Music. Instruction is given upon the Piano and Cabinet Organ, and in the Cultivation of the Voice, Chorus Singing and Notation.

## DEPARTMENT OF INDUSTRIAL EDUCATION.

Manual labor has been a feature from the beginning, and with the growth of the College new facilities for industrial training have been added. Instruction is now given, both to young men and women, in varied kinds of handicraft. The object is two-fold:—

*First* : To give practical instruction in the best methods of doing work ;

*Second* : To enable worthy students to pay in labor a part of their expenses, thus developing in them a spirit of self-reliance.

Industrial training is given through eight years. In the Third and Fourth Grades the boys receive instruction in knife-work, preliminary to the training in Carpentry, which extends through the Fifth, Sixth, Seventh and Eighth Grades. Into the Ninth Grade Mechanical Drawing is introduced. In the Tenth Grade instruction is given in Agriculture and Horticulture.

Graded instruction in Sewing, beginning with plain needle work, and including the Cutting and Fitting of Garments, is given to the girls from the Third to the Seventh Grades inclusive; instruction in Cooking, in the Eighth Grade; in Nursing, with special instruction in Hygiene, during the Ninth and Tenth Grades.

The Industrial instruction of the Ninth and Tenth Grades is shared by the Junior and Middle Classes of the College Preparatory Department.

AGRICULTURE.—The College farms, garden and orchard—about 270 acres in all—are under the supervision of an Agricultural College graduate, and give an excellent opportunity for practical instruction.

THE TRADES.—In the Slater Shop, under a skilled mechanic and architect as Superintendent, students become acquainted with carpentry, cabinet making, painting and glazing, and to some extent, with blacksmithing. In this building is the printing office.

A shoe-shop, in which repairing is done, is located in the basement of Stone Hall.

GIRLS' INDUSTRIES.—A well-arranged sewing room, and a laundry with modern appliances, are valuable adjuncts to our industrial resources. Practical lessons are given in house-keeping, dining-room and kitchen work; while instruction in cooking receives due attention. An experienced nurse, apart from personal care of the sick, has a class in training as assistants in this specific work.

Industrious young people of good character, without money, but desirous of obtaining an education, can usually find employment on the farm, in the laundry or boarding hall, until they have earned enough to enable them to attend school a part or all of the year. Quite a number have be-

gun their course here in this manner. They have all the privileges of the family, and study in the Night School.

Blank applications will be mailed to any who desire to enter the Department of Industries.

---

#### LITERARY SOCIETIES.

The students sustain three literary organizations: the Adelpic and Athenæum for young men, and the Vesperian for young ladies. Besides the training of the societies, public rhetorical exercises are held in the chapel under the direction of the Faculty.

---

#### LIBRARY, APPARATUS AND READING ROOM.

The Library occupies a fine room in Swayne Hall, and contains about 3,500 volumes. It is increasing in value, and a small sum has been secured for its support. It is accessible to all without cost.

The College is in possession of a small philosophical apparatus, and a museum. Several hundred valuable specimens, the gift of generous friends, have been received recently, including a choice collection of New York minerals, from Dr. Henry B. Nason, of the Rensselaer Polytechnic Institute.

A Reading Room, open to students, is found in both Stone and Foster Halls.

---

#### PRIZES.

Prizes, in the form of Free Tuition, are given to students in the Grammar and Normal Departments for excellence in reading and declamation. Two prizes, of ten and five dollars each, established by Rev. J. M. Whiton, Ph. D., of New York, may be awarded annually for essays on some theme in History, Philosophy or Literature. The prizes were made available in 1888, and this year the first prize was awarded to Lucy A. Austin, and the second prize to Lulu Jenkins.

#### LECTURES.

Monthly, during the school year, alternating with society exercises and social gatherings, lectures on literary and practical subjects are delivered by members of the Faculty, and others from abroad.

---

#### ALUMNI MEETING.

By recommendation of a committee appointed the previous year, an Alumni Association was organized at the College Commencement, in 1882. This Association has an annual meeting. It seeks to perpetuate acquaintance and strengthen fellowship by reunions and correspondence, and it also nominates some of its number to share, under the direction of the Faculty, in the exercises of Commencement.

## GENERAL INFORMATION.

### AIMS.

The advantages and privileges of the Institution are offered to all of either sex, without regard to sect, race, color, or nationality.

It aims to furnish a thorough education, under the best methods of instruction, in a range of studies sufficiently wide to secure a substantial preparation for professional duties, teaching, or general business.

It aims to secure the best development of social character, by bringing students of both sexes, from various localities, under the same general discipline, occupying separate buildings, yet constituting one family; associating in school and religious exercises, and under the constant oversight of the teachers.

Above all, it claims to be an institution of *Christian* learning. It stands upon the broadest possible basis, and is in no respect *sectarian*.

It is designed to make the Institution, as far as possible, a *home* for those who attend. Parents and guardians may rest assured that any youth placed under the care of the instructors will be their special charge, and that at all times the rules of good conduct will be enforced.

### MEMBERSHIP.

For membership in the College, applicants must have good moral character, and must present satisfactory testimonials. Students from other schools should bring certificates of honorable dismissal.

All students from abroad are required to board in the Institution, unless special permission is given to board elsewhere.

Application should be made at least one month before the beginning of the school year.

Students should be present on the first day of the school year, and continue, if possible, to the end. A delay of a few days will hinder the student during the entire session.

Students from a distance should arrange their journeys so as not to arrive on the Sabbath. The College aims to be thoroughly Christian, and reverences the Lord's day. Trunks will be transferred to and from the depots free of charge only on the day before the opening and the day after the close of the term.

Students in regular classes lose their membership when absent one month; while *absence without leave* may forfeit the pupil's right to membership in the Institution.

Those who have not a fixed purpose to improve their minds, and an earnest desire to fit themselves for usefulness, should not seek admission, as the presence of such is not tolerated.

Each student should bring a Bible; it is needed for private reading, for Sunday School, and for the weekly Bible lesson.

All should be provided with *warm* clothing. Each young lady should bring water-proof, rubbers and umbrella.

### EXPENSES.

Tuition in Primary Department, per month, . . . . .	\$ .50
Tuition in Intermediate Department, per month. . . . .	.75
Tuition in Grammar, Normal and Collegiate Departments, per month, . . . . .	1.00
Instruction in Instrumental Music, per month, . . . . .	2.00
With use of instrument, one hour daily.	
Instrumental Music, per term, payable in advance, . . . . .	5.00

The price of board will vary with the cost of provisions and the expense of preparing the same for the table. The dining room is in Foster Hall, and the bill of fare is arranged by a committee appointed by the students. From \$4.50 to \$5.00 per month will cover the cost of table board.

Each room in the boarding halls is intended for two students, and is plainly but neatly furnished. Students will provide their own towels, fuel, lights, soap, etc. Oil and fuel may be purchased from the College as required.

An incidental fee of one dollar is charged all boarding students upon entering.

The monthly expenses for a single student are estimated as follows:

Rent of furnished room, . . . . .	\$1.00	\$1.00
Board, . . . . .	4.50 to	5.00
Tuition, . . . . .	.50 to	1.00
Fuel, . . . . .	.20 to	.50
Lights, . . . . .	.10 to	.25
Washing, at the College Laundry, . . . . .	.75	.75
Total, . . . . .	\$7.05 to	\$8.50

A deposit of fifty cents is required of all boarders, upon receiving their door keys. This sum is refunded when the key is returned.

All boarders are required to work for the Institution at least one hour each day. This requirement makes the preceding low charges possible.

Opportunity will be given girls to do their own washing and ironing.

All needed text-books can be bought at cost at the College.

*Payments are to be made promptly as required.* Students who fall behind in their accounts a half month are *liable to suspension from recitations* until they pay, or make other satisfactory arrangements.

All old accounts must be settled before entering school for another year.

Upon arrival, students are expected to deposit their money with the Treasurer.

No one unable to pay in full, and hoping to secure aid, or to pay in part by labor, should come without previous correspondence and express permission.

Remittances in payment of bills should be made by money-orders, drafts, in registered letters, or by express. Make money-orders and drafts payable to the Treasurer, and address all moneys to him; receipts will be promptly returned.

## REGULATIONS.

Students, as far as possible, are taught self-control, appeal being made to their own sense of justice, propriety and honor, and they *are understood, on entering, to pledge themselves to obey all the regulations of the Institution.*

It is the aim of the Institution to promote good scholarship and Christian character, and the following regulations have been adopted:

Students are not allowed to use intoxicating liquors, or tobacco in any form.

All profanity, playing cards or billiards, and everything of an immoral tendency, are strictly forbidden.

Keeping or using fire-arms on the premises are forbidden.

Cleanliness of rooms and person, good order and fidelity to duty are required.

Students will not throw articles from the windows of any College building, and will deposit ashes, slops, papers, etc., in the appointed places.

Students will be held responsible for damage done by them to College property.

Only plain and simple clothing is to be worn. Tight lacing is forbidden. Expensive dress will not be allowed at Commencement, and parents are requested not to furnish it.

A long experience has proved that much evil comes from students receiving food from home. Friends will please not send it.

Regular and punctual attendance upon all hours of study and recitation is required.

Students are required to attend punctually the following religious exercises: Church service and Sabbath School on the Sabbath; daily prayers at their boarding places, and in the morning at the chapel or school-room. There are other services at which attendance is optional, although it is earnestly desired, and is very general. These are the services of the Missionary Societies, Mission Sabbath Schools, and Class and General Prayer Meetings.

## WANTS.

Without State aid, and relying entirely upon the gifts of the benevolent, the College has need of many things. These wants may be summarized as follows:

1. *Literature*.—Bibles, Sunday-school books, hymn-books and papers are needed for neighboring mission schools and those planted by students who teach in the summer vacations.

2. *Student Aid*.—The charges for board and room are made as small as possible, yet many require some help. This aid is extended only to the worthy, to some extent is paid for in work, and perhaps there is no surer or quicker way of doing good than by thus helping some promising student into a life of usefulness.

3. *Apparatus and Cabinet*.—The College is in need of additions to its Mineralogical Cabinet, and Physical and Chemical Apparatus.

4. *Library*.—A few class-mates and college friends of the President have begun an endowment known as the "Yale Library Fund of Talladega College." As yet the fund is small, and its increase is earnestly desired.

5. *Large Sums for the Industrial Department*.—No instruction among the Freedmen is complete that does not sedulously care for industry. Skilled labor is rare, and the hand as well as the head requires careful training. After moral and hygienic instruction, nothing is more essential than lessons in labor and economy. A model kitchen is greatly desired. The College farm needs buildings, implements and fences. The Slater shop, recently enlarged, should be supplied with additional tools, and a small engine.

6. *Endowed Scholarships are Greatly Desired*.—The following have been secured, the income from which is devoted to students in Theology: Five Thousand dollars from the estate of R. R. Graves, Morristown, N. J.; One thousand dollars from Mrs. Nancy M. Stone and Miss Abbie Stone, Jefferson, Ohio; One thousand dollars from Rev. John and

Mrs. Lydia Hawes Wood, Fitchburg, Mass.; One thousand dollars from H. B. Lincoln, Worcester, Mass.

General Scholarships have been founded as follows: One thousand dollars by William Belden, New York; Four hundred and thirty-four dollars and twenty-six cents by friends of the late W. C. Luke, Canada; Seven hundred and nine dollars and twenty five cents by E. A. Brown, North Bloomfield, Ohio; Three hundred and seventy-five dollars by friends of the late C. B. Rice, Brattleboro, Vermont.

7. *A General Endowment for Salaries*, especially in the College and Theological Departments, has become a necessity. A stable institution must have a constant income. In this a beginning has been made. Twenty thousand dollars has been given towards an endowment for the President's salary, but unless this sum is greatly increased, and other endowments are secured, the growing needs of the Institution cannot be met. This object is commended for the bequests of those who cannot give to it while living. The corporate name is "Talladega College, Talladega, Alabama."

## LOCATION.

This Institution, founded and sustained by the American Missionary Association, is at Talladega. Situated among the Appalachian foot-hills, on the East Tennessee, Virginia and Georgia, the Louisville and Nashville, and the Birmingham and Atlantic Railroads, it is easily accessible from all parts of the State, and is so far removed from the great cotton belt as to escape the more intense heat and malaria of that region. The buildings, shaded by trees, stand on high ground, about half a mile from the village.

In the vicinity of coal fields, surrounded by hills filled with iron, in the midst of a rapidly increasing population, with clear air and pure water, Talladega College is not surpassed in advantages of location and beauty of scenery by any institution in the South.

It is the first College open to colored people in the State, and in Alabama alone it has a constituency of 700,000 from which to draw its students. Its fields, its location, and its

possibilities are all that could be desired. Hitherto its work has not been small; its need and opportunities were never greater than now.

---

ADDRESSES.

Letters of inquiry upon any subject connected with the College will be very gladly received and answered. Financial letters should be addressed to

MR. E. C. SILSBY,  
Treasurer.

Letters regarding the Department of Theology to

REV. G. W. ANDREWS,  
Instructor in Theology.

Other letters to

REV. HENRY S. DeFOREST,  
President.

TALLADEGA COLLEGE, *Talladega, Alabama.*