

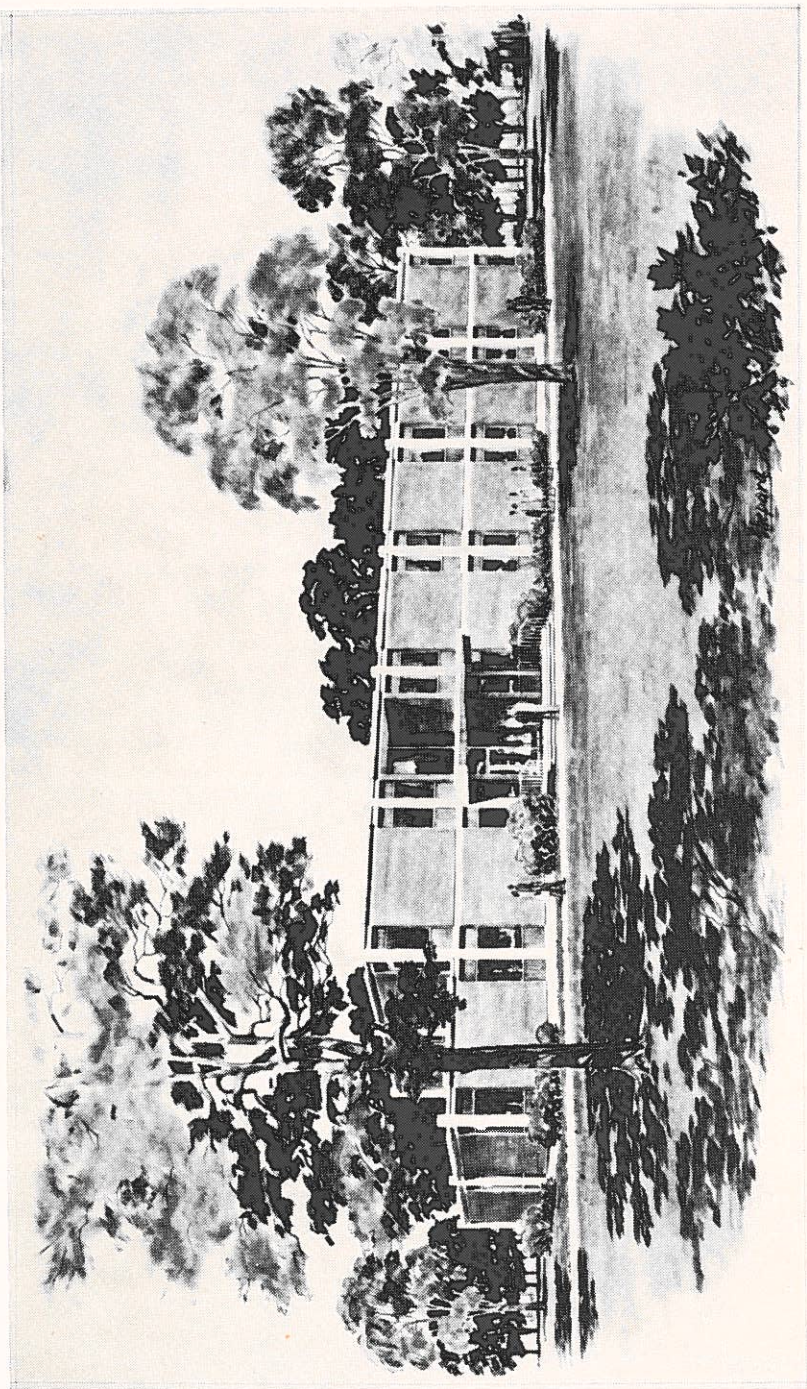


Talladega College

THE TALLADEGAN

Catalog Number, March 1965

98th Anniversary
Issue



Summer Hall—Administration Building (Under Construction)

Published by Talladega College seven times a year, October, December, January, February, March, May, June.
Entered as second-class matter at the post office of Talladega, Alabama, under the Act of August 24, 1912.

Catalog

AND

Announcements

OF

TALLADEGA COLLEGE

Talladega, Alabama

MARCH
1965



Handwritten signature

Founded in 1867 by the American Missionary Association
Chartered as a College in 1869
Charter Amended by the Legislature in 1889

AIMS OF THE COLLEGE

Talladega College is dedicated to the growing realization of the basic fundamentals of the Christian faith—the fatherhood of God and the brotherhood of man. It is nonsectarian and interracial in both faculty and student body. It believes that the training of literate, humane persons—willing and capable of assuming enlightened personal responsibility in citizenship—is the chief task of the liberal arts college.

The College aims to provide, under guidance, an opportunity for vital contacts with inspiring men and women, with the important areas of human knowledge, and with varied experiences in living by means of which the student, in his fundamental task of building personality, may grow so that (a) the continuing process of his personal development will be purposefully directed; so that (b) he will be able to live successfully in a changing and imperfect social order; and so that (c) he will be willing and able to lend intelligent and active assistance in promoting desirable social changes.

In the course of his development in college, the student is expected to make reasonable progress in the following areas: (1) the acquisition of usable information concerning the general nature of things and of men; (2) the development of sustained interest in and progressive mastery of a chosen field of study and of some particular aspect of this field; (3) the mastery of such skills and techniques as are needed for effective living; and (4) the constant practice of constructive attitudes which will lead him to promote the common welfare.

TABLE OF CONTENTS

Aims of College	2
Calendar 1965-66	4
Academic Calendar	5
Diagram of Campus	6
General Information:	
Historical	7
Location	7
Grounds	8
Buildings	8
Library	9
Dormitories	10
Health	10
General College Activities	11
Regulations	12
Student Aid and Self Help	13
Scholarship Funds	15
Awards	17
Expenses	19
Admission of Students	22
Graduation	23
Scholarship	25
Withdrawals	26
Courses of Study:	
General College	27
Organization of Courses of Study	29
The Humanities	30
The Natural Sciences and Mathematics	41
The Social Sciences	46
Scholars	56
The Graduating Class 1964	58
Awards	59
Visiting Speakers and Artists	60
Little Theatre Productions	62
Art Exhibits	62
Summary of Enrollment	63
Faculty and Staff	64
Administrative Staff	67
Alumni Association Officers	68
Board of Trustees	69
Index	70

1965 CALENDAR 1966

1965

JANUARY							FEBRUARY							MARCH							APRIL						
S	M	T	W	T	F	S	S	M	T	W	T	F	S	S	M	T	W	T	F	S	S	M	T	W	T	F	S
3	4	5	6	7	8	9	7	8	9	10	11	12	13	7	8	9	10	11	12	13	4	5	6	7	8	9	10
10	11	12	13	14	15	16	14	15	16	17	18	19	20	14	15	16	17	18	19	20	11	12	13	14	15	16	17
17	18	19	20	21	22	23	21	22	23	24	25	26	27	21	22	23	24	25	26	27	18	19	20	21	22	23	24
24	25	26	27	28	29	30	28	28	29	30	31	25	26	27	28	29	30	..
31

MAY							JUNE							JULY							AUGUST						
S	M	T	W	T	F	S	S	M	T	W	T	F	S	S	M	T	W	T	F	S	S	M	T	W	T	F	S
2	3	4	5	6	7	8	6	7	8	9	10	11	12	4	5	6	7	8	9	10	1	2	3	4	5	6	7
9	10	11	12	13	14	15	13	14	15	16	17	18	19	11	12	13	14	15	16	17	15	16	17	18	19	20	21
16	17	18	19	20	21	22	20	21	22	23	24	25	26	18	19	20	21	22	23	24	22	23	24	25	26	27	28
23	24	25	26	27	28	29	27	28	29	30	25	26	27	28	29	30	31	29	30	31
30	31

SEPTEMBER							OCTOBER							NOVEMBER							DECEMBER						
S	M	T	W	T	F	S	S	M	T	W	T	F	S	S	M	T	W	T	F	S	S	M	T	W	T	F	S
5	6	7	8	9	10	11	3	4	5	6	7	8	9	7	8	9	10	11	12	13	5	6	7	8	9	10	11
12	13	14	15	16	17	18	10	11	12	13	14	15	16	14	15	16	17	18	19	20	12	13	14	15	16	17	18
19	20	21	22	23	24	25	17	18	19	20	21	22	23	21	22	23	24	25	26	27	19	20	21	22	23	24	25
26	27	28	29	30	24	25	26	27	28	29	30	28	29	30	26	27	28	29	30	31	..	
..	31

1966

JANUARY							FEBRUARY							MARCH							APRIL						
S	M	T	W	T	F	S	S	M	T	W	T	F	S	S	M	T	W	T	F	S	S	M	T	W	T	F	S
2	3	4	5	6	7	8	6	7	8	9	10	11	12	6	7	8	9	10	11	12	3	4	5	6	7	8	9
9	10	11	12	13	14	15	13	14	15	16	17	18	19	13	14	15	16	17	18	19	10	11	12	13	14	15	16
16	17	18	19	20	21	22	20	21	22	23	24	25	26	20	21	22	23	24	25	26	17	18	19	20	21	22	23
23	24	25	26	27	28	29	27	28	27	28	29	30	31	24	25	26	27	28	29	30
30	31

MAY							JUNE							JULY							AUGUST						
S	M	T	W	T	F	S	S	M	T	W	T	F	S	S	M	T	W	T	F	S	S	M	T	W	T	F	S
1	2	3	4	5	6	7	5	6	7	8	9	10	11	3	4	5	6	7	8	9	7	8	9	10	11	12	13
8	9	10	11	12	13	14	12	13	14	15	16	17	18	10	11	12	13	14	15	16	14	15	16	17	18	19	20
15	16	17	18	19	20	21	19	20	21	22	23	24	25	17	18	19	20	21	22	23	21	22	23	24	25	26	27
22	23	24	25	26	27	28	26	27	28	29	30	24	25	26	27	28	29	30	28	29	30	31
29	30	31	31

SEPTEMBER							OCTOBER							NOVEMBER							DECEMBER						
S	M	T	W	T	F	S	S	M	T	W	T	F	S	S	M	T	W	T	F	S	S	M	T	W	T	F	S
4	5	6	7	8	9	10	2	3	4	5	6	7	8	6	7	8	9	10	11	12	4	5	6	7	8	9	10
11	12	13	14	15	16	17	9	10	11	12	13	14	15	13	14	15	16	17	18	19	11	12	13	14	15	16	17
18	19	20	21	22	23	24	16	17	18	19	20	21	22	20	21	22	23	24	25	26	18	19	20	21	22	23	24
25	26	27	28	29	30	..	23	24	25	26	27	28	29	27	28	29	30	25	26	27	28	29	30	31
..	30	31

ACADEMIC CALENDAR

1965

- September 13, Tuesday—Faculty-Staff Orientation Conference and faculty meeting 7:30 p.m.
- September 15, Wednesday—Classes for first year students begin 8:30 a.m.
- September 16, 17, 18, Thursday, Friday, Saturday—Registration for upperclassmen. Late fee charged after 12:00 noon Saturday, September 18
- September 20, Monday—All classes of the ninety-ninth academic year begin.
- November 7, Sunday—Founders Day
- November 25-26, Thursday-Friday—Thanksgiving Recess.
- December 17, Friday—Christmas recess begins at 12:00 noon.
- December 18, Saturday—Dormitories and Dining Hall close at 9:00 a.m. for Christmas Recess.

1966

- January 3, Monday—Classes begin at 8:00 a.m.
- February 4, Friday—First Semester ends.
- February 7, Monday—Second Semester begins.
- April 7, Thursday—Spring Recess begins at 5:30 p.m.
- April 12, Tuesday—Classes resume at 8:00 a.m.
- May 16-20, Monday-Friday—Week of Senior Comprehensives.
- May 23-June 3—Examination period for General Division Comprehensives.
- June 4, Saturday—Class Day and Alumni Class Reunions.
- June 5, Sunday—Baccalaureate Sunday.
- June 6, Monday—Commencement Day.

GENERAL INFORMATION

HISTORICAL

The first college opened to Negroes in the State of Alabama began in 1867 as a primary school. The American Missionary Association purchased a fine colonial brick building which had been erected in 1852-3 on an elevation overlooking the town of Talladega from the west; and with four teachers and 140 pupils, the future college began its work in the rudiments of learning. Incorporated in 1869, the college had its charter confirmed and enlarged by the legislature of Alabama twenty years later.

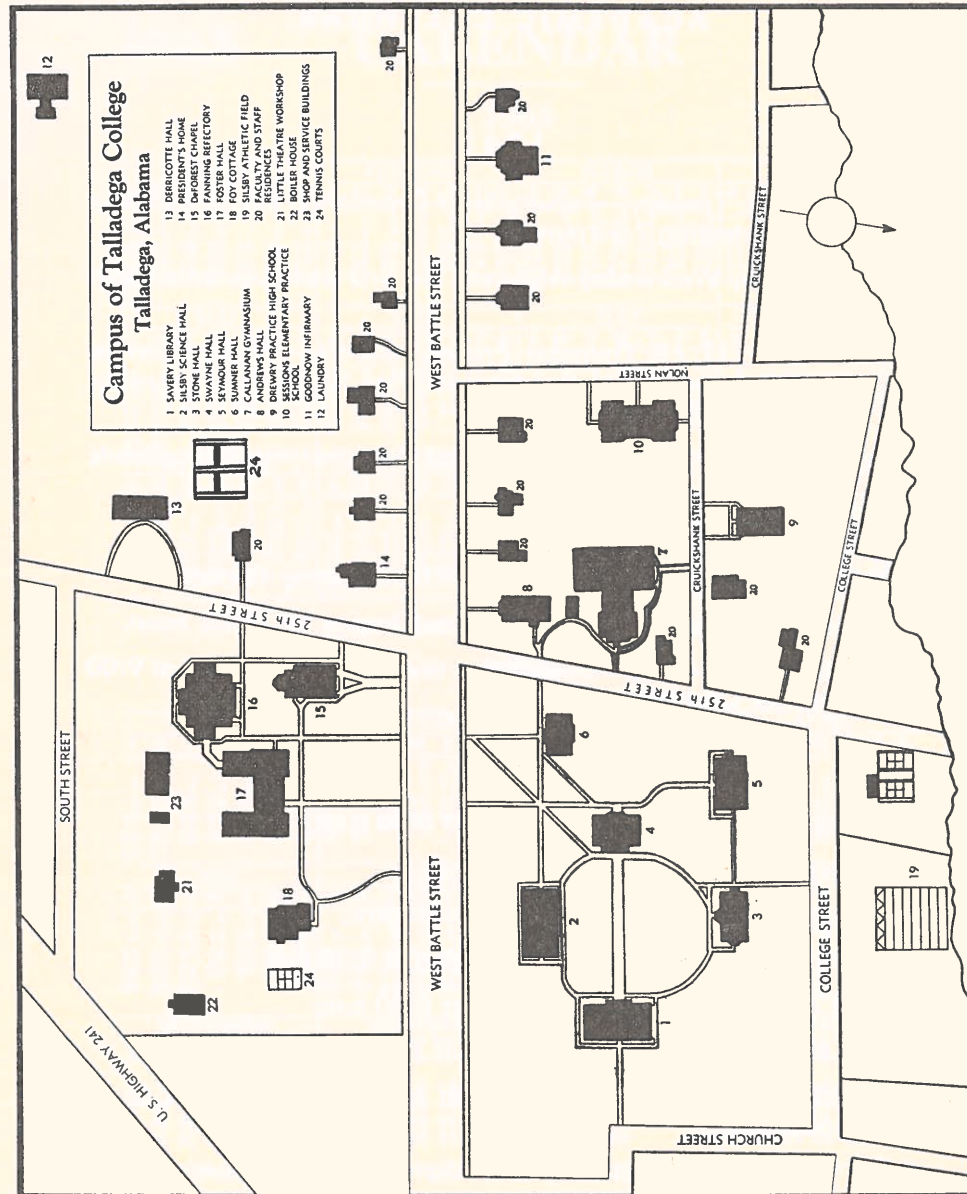
The training of leaders in education was the first, and has been a continuing interest of the institution. The first courses offered above elementary grades were normal courses for teachers. The College continues the important work of preparing teachers, using the public schools of the city and of other localities to give its students the opportunity for laboratory experience.

Theological training was begun in 1872, with a class of six young men representing three Christian denominations; but after fifty-six years of constructive and sound training of ministers and missionaries, this work was discontinued to permit the concentration of the resources of the College on the effective maintenance of a first class liberal arts college.

An outline of a course of collegiate grade first appeared in the catalog for the year 1890; and in 1895 the first class was graduated with the bachelor's degree. Since that time, the College has shown steady growth. Today, old Swayne Hall stands in the center of sixteen major buildings well placed in an attractively landscaped campus. Numerous dwellings for faculty and staff members cluster in the adjoining streets. The academic standards of the College have been kept high. Talladega College is recognized both nationally and regionally. It is on the last published list of accredited colleges of the Association of American Universities, and is an accredited member of the Southern Association of Colleges and Secondary Schools.

LOCATION

Talladega is at the heart of a fertile valley in the foothills of the Blue Ridge. Its elevation of 700 feet above sea level gives it a healthful climate, as is evidenced by the fact that the State selected the town of Talladega as the seat of its institution for the deaf and the blind. In the heart of the timber, iron, and coal regions of Alabama, it is a place of growing industrial importance.



GROUNDS

The college grounds comprise three hundred acres of which fifty are used for the main campus, and two hundred are woodland.

The Silsby Athletic Field, about fifteen acres in size, is an enclosed field used for football, baseball, softball, and track.

Four all-weather tennis courts, surrounded by a ten-foot fence enclosure, provide easily accessible facilities for this popular form of recreation.

BUILDINGS

The College is housed in eighteen main buildings. All are substantial brick structures with modern equipment, and heated by steam from a central plant.

Swayne Hall contains class rooms and the college offices. It was purchased in 1867 and named after General Wager B. Swayne, then of the Freedman's Bureau, who interested himself in its purchase. This is the first building of the College.

DeForest Chapel was built in 1903 in commemoration of the life and service of Rev. Henry Swift DeForest, D.D., President of the College from 1880 to 1896. This building is used for religious services of the College as well as for a general auditorium.

Savery Library, completed in 1939, is named in honor of William Savery, a carpenter who helped to build Swayne Hall and who became an original trustee and incorporator of the College. Savery is a gift of the General Education Board, the Harkness Foundation, and other friends of the College.

Andrews Hall, built in 1909-10, is the home of the music department. Some of its rooms are also used for dormitory purposes. It is named after the Rev. George Whitfield Andrews, D.D., Dean of the Theological Department from 1875 to 1908.

Callanan College Union Building is the center of health and recreational activities of the College Family. It was constructed in 1924 from a legacy left by Dr. Callanan of Des Moines, Iowa, and a new building was added to the original unit in 1955 with funds received from the United Negro College Fund. The building contains a swimming pool, gymnasium, little theatre, canteen, lounges, locker and shower rooms, classrooms, offices, and game and listening rooms.

Silsby Science Hall contains the laboratory for the natural sciences and classrooms for sciences and mathematics. It is named after Dr. E. C. Silsby who was for thirty-seven years a member of the College faculty. The building is, in part, the gift of the General Education Board and, in part, of friends and alumni of the College. It was completed in 1926.



Preparations for Art Exhibit



Seymour Hall—Dormitory for Men



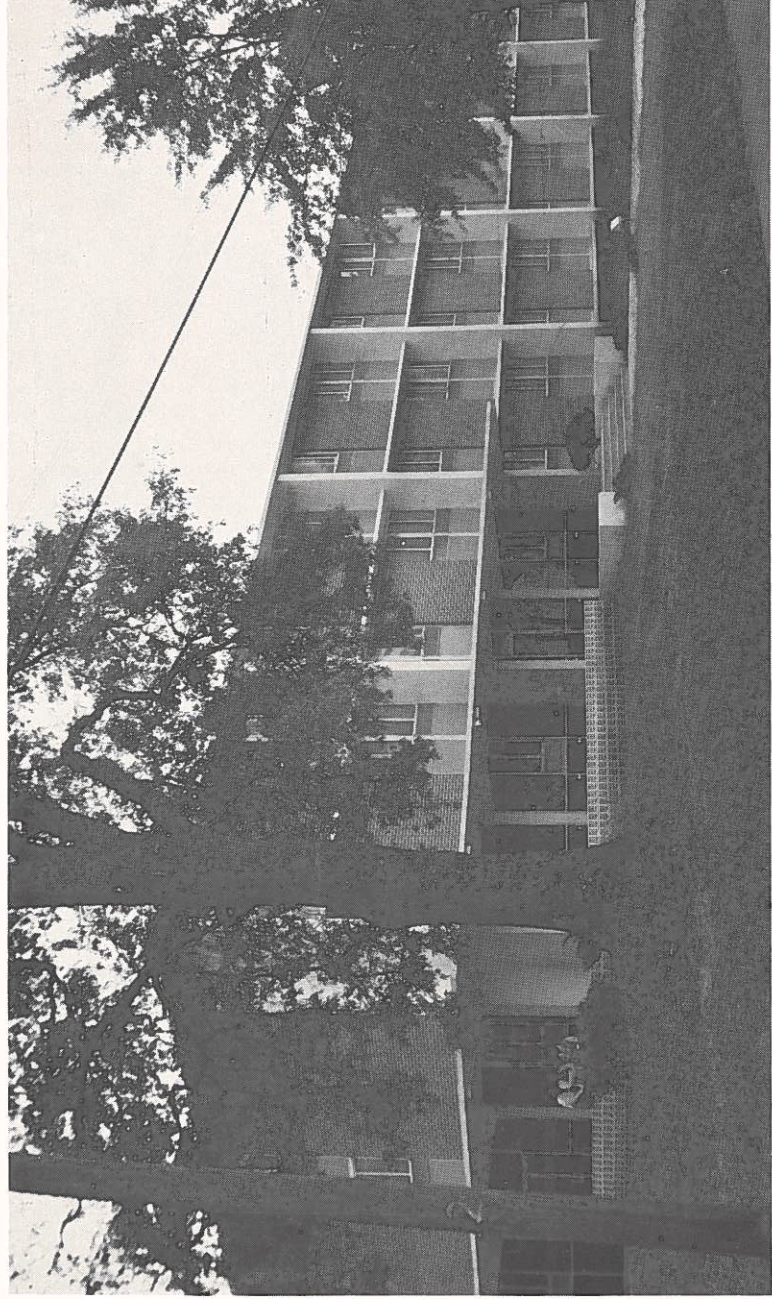
Foster Hall—Dormitory for Freshman Women—in the distance



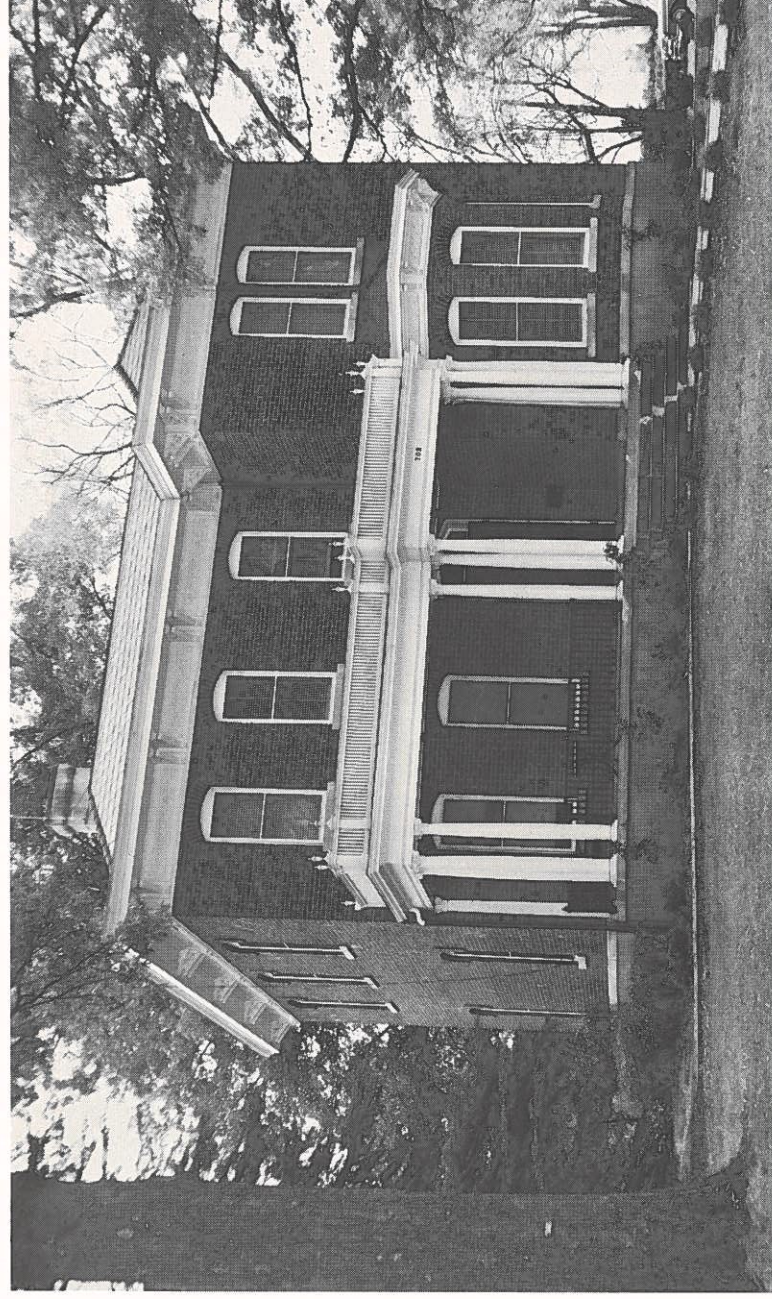
Intercollegiate Basketball Game



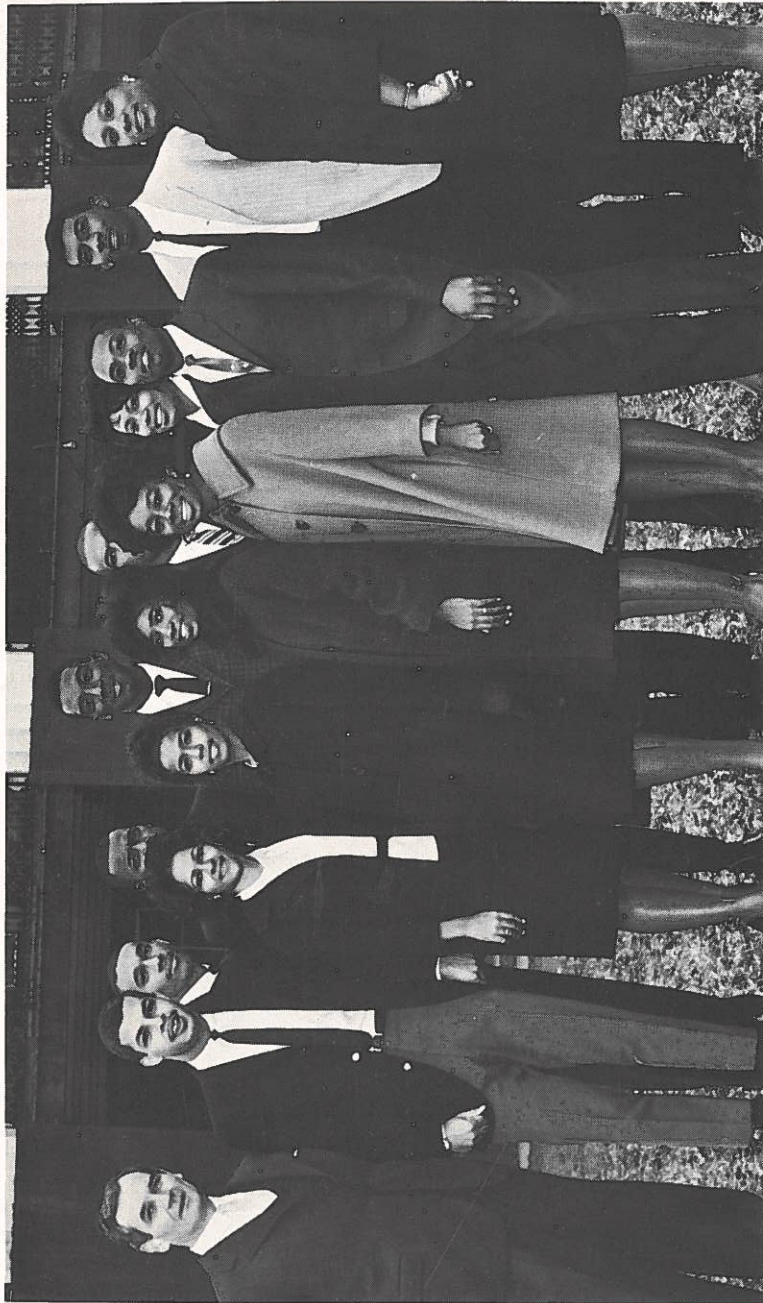
Beta Kappa Chi for Refreshments after Meeting



Ish Hall—Dormitory for Women



The President's Home



Language Students in front of Swayne Hall

Sessions Hall contains the classrooms for the department of education, the art studio, and an assembly room used by various college groups. It was built in 1925 from a legacy left by Mrs. Mary Johnson Sessions.

Foster Hall was erected in 1869, enlarged in 1902, and again in 1929. It serves as a dormitory for the college women. The Rev. Lemuel Foster of Blue Island, Illinois, was the principal donor to the original building.

Stone Hall, built in 1881, is a gift of Mrs. Valerie G. Stone, of Malden, Massachusetts. It houses the men of the General Division.

Seymour Hall was built in 1923, in part, from a legacy of Mr. Lyman Kay Seymour, of Payson, Illinois. It is a resident home for college men.

Drewry Hall, built in 1932 and remodeled in 1948, is a dormitory for senior men and campus guests.

Foy Cottage, built in 1901, is a dormitory for faculty-staff members. The principal donors were Mr. and Mrs. J. H. Foy, of New Haven, Connecticut.

Fanning Hall, the College refectory, was built in 1927-28 from a legacy of Dr. David H. Fanning, of Worcester, Massachusetts. In this building are found the dining rooms for all members of the college group who live in the residence halls.

Goodnow Infirmary was built in 1909-10, in part, from a legacy of Mrs. E. A. Goodnow. Here are found wards, private rooms, and clinics for the use of the whole college group.

Crawford House, named in honor of Attorney George W. Crawford of the class of 1900, houses faculty-staff members.

Juliette Derricotte House, built in 1940-41, is the gift of the Harkness Foundation. It is the home of several instructors.

Ish Hall, constructed in 1963, was named in honor of an alumnus, Jefferson Ish, who at the time of his death was a member of the Board of Trustees. It is a dormitory for women.

LIBRARY

The main library is housed in a modern structure which contains three large reading rooms for college students, stacks for shelving 60,000 volumes, an Art and Listening Room, an Archives Room, a community reading room for citizens of Talladega, and a service room for the bookmobile collection, besides workrooms and offices. The present collection contains about 46,220 volumes, not including books in the community, county, and school libraries. The books are well chosen to meet the reading needs of the students and the collection is constantly being improved by addition and elimination. Over 2,432 phonograph records are available for loaning

purposes, as well as nearly 475 framed pictures for use during the year in the dormitories. About 162 periodicals are currently received by the main library. Three full-time librarians, two assistants, and many student workers are in charge of the work.

DORMITORIES

The college has five modern dormitories for students: Foster, Stone, Seymour, Drewry Halls, and Foy Cottage.

Students who will reside in the college dormitories are required to bring with them sufficient towels, four sheets, three pillow cases, two blankets or quilts and two bedspreads. No reductions will be made in the charge for Room, Board and Laundry because a student does not prefer to use available laundry service. For charges and room deposits, see "Expenses," page 19.

Foster Hall provides living accommodations for women. On the lower floor are well-furnished living rooms serving as a social center for the college women, while in the basement are service rooms. The equipment is modern throughout.

Stone Hall accommodates men. A social room with magazines and newspapers is located on the ground floor.

Seymour Hall has accommodations for men with social and recreational facilities on the lower floor.

Drewry Hall accommodates men and guests.

Ish Hall, a new modern dormitory, will accommodate 128 women and head resident.

THE COLLEGE REFECTORY

Fanning Hall is a modern building. The dining rooms are large and attractive, amply able to care for the whole college group. The service is under the supervision of trained and experienced dietitians. The excellent facility makes possible the serving of wholesome meals at economical prices and in pleasant surroundings.

FACULTY HOMES

In addition to dormitory facilities the College owns fifteen houses which serve as homes for members of the faculty and staff and their families.

HEALTH

No student is admitted without a physical examination, and all applicants are accepted subject to the results of this examination. A careful oversight of the health of the college family is observed.

The College provides a part-time physician and a visiting dentist. A registered nurse is in charge of the Goodnow Infirmary.

GENERAL COLLEGE ACTIVITIES

PUBLICATIONS

The Talladegan is published by the College under the supervision of a faculty committee. It deals with matters of general interest to alumni and friends of the College. One of its issues is the catalog of the institution.

The Talladega Student is published by the Press Club, an organization open to students interested in journalism. The editorial staff consists of students elected by the Press Club. Any member of the student body may contribute articles.

MUSICAL

The College choir with a normal membership of sixty voices receives careful training in voice production as well as in general choral technique.

This organization furnishes music for Sunday services and gives public performances of the standard oratorios and other choral works, furnishing valuable experience to those who can qualify for admission.

DRAMATIC ART

The Little Theatre, devoted to dramatic study, presents several productions during the year. It promotes a playwriting contest in which the winning play is produced by the members.

SPORTS

Ample provisions are made for basketball, baseball, volleyball, tennis, swimming, track, and other activities under the direction of the Department of Physical Education. Emphasis is placed almost wholly upon a well-developed program of intramural sports. While the Callanan Gymnasium affords opportunities for indoor activities, the climate makes possible outdoor sports during a large part of the year.

RELIGIOUS

An interdenominational faculty and student body make the religious life of the College inclusive and stimulating. A group of outstanding ministers and religious workers from various sections of the nation serve as college pastors during the year. Chapel service once a week and Sunday services of worship are supplemented by the voluntary religious activities of student groups, including the Young

Women's and Young Men's Christian Associations with their joint agency, World Student Christian Federation.

SOCIAL

The social activities of the College are under the supervision of a committee of faculty members and students. A program designed to provide wholesome recreation with desirable social experiences is provided. Chapters of national fraternities and sororities contribute to the social life of the College.

THE COLLEGE COUNCIL

The local policy-forming body of the College is the College Council composed of members of the student body elected by the students, instructors elected by the College faculty, and administrative officers, *ex officio*. Questions of policy are discussed in the Council, and when a consensus is reached, the policy agreed upon goes into effect.

THE STUDENT SENATE

The Student Senate is composed of representatives from each of the organizations on campus. It serves as a forum in which the students express their views and formulate the proposals on which they wish Council action.

REGULATIONS

The program of the College is administered with the purpose of securing the fullest realization possible of the aims of the College published on Page 2. Students participate with faculty members in practically all of the College procedures. When a student finds it impossible to adjust himself satisfactorily to the life of the College, he loses his membership in the College family.

The number of activities and organizations in which a single student may participate is necessarily limited, both to prevent the scattering of the energies of a given individual, and to insure widest participation.

Regular attendance upon all class exercises is expected of all students unless excused by the instructor for an extra-class project.

Regular attendance upon Sunday church services and Wednesday Chapel is required. Unexcused absences from Sunday church services in excess of two a semester or from Wednesday Chapel in excess of four a semester will automatically place a student on probation, from which he can be removed only by the Dean or the President in conference with the student and his adviser. Wednesday Chapel may be held on another week-day when circumstances warrant.

Refunds of board payments will not be made for absences of less than two consecutive weeks. No refund is made on relinquishing a dormitory room during any semester, and no refund is made on tuition during any semester.

If advancing food prices compel an advance in the rate of board, the College reserves the right to make such adjustment at any time during the school year.

Upperclassmen, without official duties during freshman orientation, will be charged for meals.

Students living in dormitories are not permitted to have cars on campus without special permission from the Dean. This permission will not be granted to freshmen. It may be granted to upperclassmen who can show a need, other than convenience, for having a car.

Advance room fee of \$10.00 is necessary to insure dormitory reservation for old students and must be paid by July first if room assignments are to be assured.

Advance registration fee of \$15.00 and room reservation fee of \$10.00 are necessary to complete application for admission.

The advance fees will be credited to the fees of the students. Deposits are not returnable except in case of applicants who are not accepted.

STUDENT AID AND SELF HELP

Four kinds of financial assistance are available: Scholarships, Grants-in-Aid, Loans, and Part-time Employment. Applications for Scholarships, Grants-in-Aid, or Loans are made to the Committee on Student Financial Aid at a designated time during the spring term. All financial help is available in two equal installments during the college year.

Special scholarships are offered to freshmen who stand very high scholastically in their high school graduating classes. The amounts vary from full tuition to part tuition.

Each year an incoming freshman is chosen through competitive examination for either the Savery, Headen, White, or Tarrant Scholarship. The holder of one of these scholarships receives a grant covering tuition, room, and board. Each one of these scholarships may be renewed each year for the four-year college period, provided the quality of the work and the development of the holder justify it. For full information concerning the competitive examination, prospective students are asked to consult the principal of their high school or write to the Chairman of the Committee on Financial Aid at Talladega College.

The next ten highest ranking freshmen in the competitive

examination will be awarded Alumni Scholarships in the amount of \$350 each. The recipients will be designated as Alumni Scholars.

Freshman students who rank high in the competitive examination but who do not qualify as all expense or Alumni Scholars may receive scholarship awards ranging from \$100 to \$300.

Students above freshman classification who maintain a high standard of academic work and who show definite development in acquiring useful habits and attitudes are chosen to be DeForest Scholars, Andrews Scholars, or Sumner Scholars depending upon the quality of their work. Students eligible for such distinction who need financial aid and who apply for it may receive stipends as follows: DeForest Scholars, \$340; Andrews Scholars, \$290; and Sumner Scholars, \$240.

The college also gives a *Catherine Waddell Award* each year, covering tuition, room, and board, to a student of the College who has achieved excellence in scholarship and the expression of the ideals of Christian living, and who shows evidence of developing into an effective adult citizen. This scholarship was created in memory of Catherine Hughes Waddell who for many years faithfully served the UNCF. (Not available to Headen, White, Savery or Tarrant Scholars.)

In addition to the foregoing awards, there are limited funds available for student grants-in-aid, and loans, made on the basis of academic record, adaptation to college life, and individual need. Scholarship holders are eligible to apply for loans. Students receiving grants-in-aid may be asked to do some work on the campus.

Part-time employment for a limited number of students is available in the dining hall and in various campus positions. A few students are able to find off-campus employment. Applications for part-time employment are made through the Public Relations Office.

SCHOLARSHIP FUNDS

The William Belden Scholarship of \$1,000, established in 1882, by William Belden, of New York.

The William C. Luke Memorial Scholarship of \$434.26, established in 1882, by the friends of the late William C. Luke, of Canada.

The E. A. Brown Scholarship of \$709.25, established in 1886, by E. A. Brown, of North Bloomfield, Ohio.

The C. B. Rice Memorial Scholarship of \$440, established by friends of the late C. B. Rice, of the Piedmont Congregational Church, Worcester, Massachusetts.

The Brazillai Swift Scholarship of \$3,000, established in 1893, by devise of Mrs. Martha G. Swift, of Hansfield Center, Connecticut.

The Eunice M. Swift Trumbull Scholarship of \$500, established in 1895, by devise of Mrs. Trumbull, of Mansfield, Connecticut.

The Walter S. Hogg Scholarship of \$3,000, established in 1921, by Mrs. Hogg, of Providence, Rhode Island, as a memorial to her husband.

The Mary E. Wilcox Memorial Scholarship of \$1,000, established in 1915, by J. S. Wilcox, of Madison, Ohio.

Charles B. Baxter Scholarship of \$1,000, established in 1914, by devise of Charles M. Baxter, of Redlands, California.

The Eunice Hatch Baxter Scholarship of \$1,000, established in 1914, by devise of Charles M. Baxter, of Redlands, California.

The Esther A. Barnes Scholarship, begun by the Class of 1896 and at present amounting to \$100.

The Mrs. R. M. Tenny Scholarship Fund of \$1,000, established in 1917 by Mrs. R. M. Tenny of Montour, Iowa.

The Dr. and Mrs. S. W. Howland Scholarship of \$1,000, established in 1901, by friends of Dr. and Mrs. Howland.

The Stone Scholarship of \$1,000, established in 1882, by Mrs. Nancy Stone and Miss Abbie Stone, of Jefferson, Ohio.

The John and Lydia Hawes Wood Scholarship of \$1,000, established in 1886, by the Rev. John and Mrs. Lydia Wood, of Fitchburg, Massachusetts.

The H. W. Lincoln Scholarship of \$1,000, established in 1886, by H. B. Lincoln, of Worcester, Massachusetts.

The William E. Dodge Scholarship of \$5,000, established in 1902, by the trustees of the Education Fund, left by devise of the said William E. Dodge, of New York.

The Carroll Cutler Scholarship of \$500, left by devise of Mrs. Carrol Cutler, in 1913.

The Lucius and Helen R. Thayer Scholarship Fund of \$2,000, given in 1934 as a part of the Endowment Funds of the College in memory of the two persons named, of Portsmouth, New Hampshire.

The James Thomas Morrow Scholarship of \$1,500, given by Mrs. Elnora Maxwell Morrow of Lexington, Kentucky, in memory of her husband, for 60 years minister in the African Methodist Episcopal Church.

The Alyn Loeb Scholarship Fund of \$250, given by T. K. Lawless, M.D. (Talladega, Class of 1914) and Mrs. Allen M. Loeb of Chicago, in honor of Mrs. Loeb's infant son, a patient of Dr. Lawless.

The Robert Gover Scholarship Fund of \$2,500, established by devise of Robert Gover (Talladega, Class of 1904), of Tuskegee, Alabama, in 1945.

The Howard K. Beale Scholarship Fund of \$5,400, established in 1946.

The Andrew McEldron Rubel and Dr. Peter Rubel Scholarship Fund of \$2,402, established in 1952.

The Joseph J. Fletcher (1901) Scholarship Fund of \$1,004, established in 1952 by his wife and his daughter Elizabeth Fletcher Allen (Class of 1926).

The Marietta Hardwick Ish (Graduate Normal Department 1876) Scholarship of \$5,500, established in 1954 by her son, the late Jefferson G. Ish, Jr. (Class of 1907) of Chicago, Illinois.

The George W. Crawford Scholarship of \$3,500, established in 1957 by his friends in New Haven, Connecticut.

The Mrs. Jane Jones (former student) Scholarship of \$2,000, established in 1958 by her son, the late Elisha H. Jones (Class of 1904) of Talladega, Alabama.

The William F. Frazier Memorial Scholarship Fund in process of being established by friends of Mr. William F. Frazier, who served as Trustee of the College for twenty-one years. At present the fund amounts to \$1,405.00.

The Jefferson G. Ish, Jr. (Class of 1907) Memorial Scholarship Fund, at present amounting to \$1,473.50, established by friends of Mr. Jefferson G. Ish, Jr., who served as Trustee of the College for five years.

The Alumni Centennial Endowment Fund, established by the alumni in 1962, present amount invested, \$10,000.00.

The Winifred S. Mathers Legacy Fund of \$500.00, established in 1963 in memory of H. Porter Smith.

The Carlton L. Ellison Scholarship Fund of \$18,855.12, established in 1963.

The Florence M. Graves Scholarship Fund, established by Mr. Charles F. Gregg. At present the fund amounts to \$2,500.00.

The Samuel Edwards Jackson Memorial Scholarship Fund, established by his brother, Lee R. Jackson '51, and friends. At present the fund amounts to \$1,122.00.

AWARDS

The Armstrong Award for Creative Ability—An award of fifteen dollars to the student who during the academic year has given the most significant evidence of creative ability in any field; subject to division at discretion of the committee. Awarded annually at Commencement, on behalf of the Rev. Robert G. Armstrong of Concord, New Hampshire.

The Whiton Writing Awards—Two awards, one of ten dollars and one of five dollars, established in 1888 by the Rev. J. W. Whiton, Ph.D., of New York, to students showing general excellence in writing.

The G. E. M. Award—An award of fifteen dollars, established by Dr. Ira M. Mason of Chicago, Illinois, in honor of his mother, Mrs. Gertrude Emma Mason, to the student doing the best work in modern languages.

The Little Theatre Award—A first award of ten dollars and a second of five dollars, sponsored by the Little Theatre, for the best one-act plays written by students.

The Buell Gordon Gallagher Award—An annual award of thirty dollars each, made to the man and woman who during their first three years at Talladega College have maintained a scholastic standing above the average, and who, in their personal living and association with their fellows, both students and staff members, have best expressed the ideals of Christian living.

The Avery Speech Awards—Two awards, one of ten and one of five dollars, endowed by Mrs. John T. Avery, of Galesburg, Illinois, in memory of her husband, for the two students showing best general ability in speaking in the classroom and on the platform.

The Marye Elizabeth Weaver Scholarship Award—An award of fifty dollars given by Chi Chapter of Alpha Kappa Alpha Sorority in memory of Marye Elizabeth Weaver '53 to a graduating woman mathematics major with a high scholastic average and high ethical ideals. If there is no one eligible to receive the award at the end of any one year, the amount is to be increased by fifty dollars each year until the next award is made.

The Thomasinia Hamilton Jeter Award—An award of fifty dollars established by Mrs. Olyve Jeter Haynes in memory of her mother, Mrs. Thomasinia Hamilton Jeter, to the senior student who

in the judgment of the Music Department faculty possesses the highest promise in vocal performance.

The Hamilton and Weaver Award Fund, established by Dr. Homer Hamilton (Class of 1930) and Dr. George A. Weaver (Class of 1930) in 1962. This award goes to the student who maintains the highest academic record during his freshman year.

Catherine Waddell Award—An award covering tuition, room, and board to the student who has shown excellence in scholarship and the expression of the ideals of Christian living, and who shows evidence of developing into an effective citizen.

The Gilbert Bottoms Award—An award of twenty-five dollars given by Gamma Psi Chapter of Omega Psi Phi fraternity in memory of Gilbert Bottoms, to a neophyte with the highest scholastic average at the end of a given year.

Loan Fund

The Wilkie Carpenter Johnstone Student Loan Fund—A fund of ten thousand dollars—established in 1959 as a memorial.

The National Defense Student Loan Program

The college is authorized to make loans under the National Defense Education Act. Applications for loans from this source should be made to the Financial Aid Committee of the College.

EXPENSES

The College spends \$2,000 a year on each student, but the annual standard cost to the student is only \$1,150. Contributions from the United Church of Christ and the American Missionary Association, along with gifts and endowments from generous donors, make this possible.

Breakdown of Total Annual Expenses

Room	\$ 200.00	
Board	325.00	
Laundry	20.00	Plus laboratory
Tuition	500.00	and music fees
Health Fee	30.00	when applicable
*Activity Fee.....	75.00	
	<hr/>	
TOTAL	\$1,150.00	

Payments are to be made as follows:

First Semester—September 16-19...	\$ 600.00	Plus laboratory
Second Semester—February 8.....	550.00	and music fees
	<hr/>	when applicable
TOTAL FOR YEAR	\$1,150.00	

Students or parents who are able to show why they cannot comply with the above schedule, may substitute the schedule below upon the approval of the business manager. A charge of \$5.00 will be made for this special privilege.

First Semester	
September 8-11	\$ 300.00
November 8	300.00
Second Semester	
January 31	275.00
March 28	275.00
	<hr/>
TOTAL FOR YEAR.....	\$1,150.00

(Student Activity Fee included with first installment of each semester.)

*Covers in part the cost of the following: College Yearbook, Little Theatre, Athletics, Student Paper, Off Campus Contacts, College Union Building Services, Social Program, Lecture Recital, Arts Festival.

For certain Art Courses laboratory fees, payable in advance, are charged as follows:

Humanities

211A	Introduction to Art	\$5.00
222A	Landscape Painting	5.00
215A	Graphic Arts	5.00
216A	Elementary Ceramics	5.00
217A	Advanced Ceramics	7.50
219A	Drawing and Composition	5.00
223A	Creative Painting	5.00
225A	} Art Education Workshop	5.00
284E			

For certain science courses, special laboratory fees are charged, as indicated in the listing of the course. These fees are payable in advance by the semester.

Natural Sciences

102B	General Biology	\$4.50 per Semester
103C	General Chemistry	Laboratory Fee \$7.50 per Semester Breakage Deposit \$5.00 per year*
102P	General Physics	Laboratory Fee \$7.50 per Semester Breakage Deposit \$5.00 per year*

MAJOR DIVISION

Biology

220B	Invertebrate Zoology	Laboratory Fee \$7.50 per Semester
222B	Comparative Anatomy of Vertebrates	Laboratory Fee \$7.50 per Semester
224B	Comparative Vertebrate Embryology	Laboratory Fee \$7.50 per Semester
225B	Histology and Microtechnique	Laboratory Fee \$7.50 per Semester
226B	Botany	Laboratory Fee \$7.50 per Semester
228B	General Bacteriology	Laboratory Fee \$7.50 per Semester
231B	General Physiology	Laboratory Fee \$7.50 per Semester
232B	Vertebrate Physiology	Laboratory Fee \$7.50 per Semester
233B	Biological Compounds	Laboratory Fee \$7.50 per Semester

Chemistry

205C	Qualitative Analysis	Laboratory Fee \$7.50 per Semester Breakage Deposit \$5.00 per year*
216C	Quantitative Analysis	Laboratory Fee \$7.50 per Semester Breakage Deposit \$5.00 per year*
206C, 207C	Organic Chemistry	Laboratory Fee \$7.50 per Semester Breakage Deposit \$5.00 per year*
209C	Physical Chemistry	Laboratory Fee \$7.50 per Semester Breakage Deposit \$5.00 per year*
211C	Projects in Chemistry	Laboratory Fee \$7.50 per Semester Breakage Deposit \$5.00 per year*

Physics

201P	Physical Optics	Laboratory Fee \$7.50 per Semester Breakage Deposit \$5.00 per year*
202P	Heat and Thermodynamics	Laboratory Fee \$7.50 per Semester Breakage Deposit \$5.00 per year*
203P	Elementary Modern Physics	Laboratory Fee \$7.50 per Semester
204P	Sound Waves and Acoustics	Laboratory Fee \$7.50 per Semester Breakage Deposit \$5.00 per year*
205P	Electricity and Magnetism	Laboratory Fee \$7.50 per Semester Breakage Deposit \$5.00 per year*

*Un-used portion refunded.

For special courses in music the following fees are charged, payable in advance:

Individual instruction in piano, organ, or voice, for students not majoring in music—

Two lessons per week.....	\$30.00	per semester
One lesson per week.....	24.00	per semester

Use of practice piano or organ—

One hour per day.....	\$ 7.50	per semester
More than one hour per day.....	15.00	per semester

Group instruction—

In piano or voice, per student.....	\$ 9.00	per semester
-------------------------------------	---------	--------------

Music library deposit—

Required of all music students.....	\$ 2.50	per year
-------------------------------------	---------	----------

Room Key Deposit —

Required of all dormitory students.....	\$ 2.00	per year
---	---------	----------

Mail Box Combination Deposit—

Required of all students.....	\$ 3.00	per year
-------------------------------	---------	----------

The latter two deposits are refunded at the end of the school year or when a student withdraws and returns his key and mail box combination card to the proper person.

In extended illness a charge is made for hospital service at the rate of one dollar a day, and the student pays for the necessary medicines.

Students who are irregular in their attendance or work incur the following:

Special Fees:

Late Registration	\$5.00
Exceeding vacation dates: First day	5.00
Thereafter, per day	1.00

Except for books, stationery, excess laundry, room key and mail box combination deposits, the College makes no other charges for a regular student, until he qualifies for a degree whereupon a fee of five dollars for the Graduate Record Examinations and a fee of ten dollars for diploma become due.

Registration includes the assignment of courses and the payment of fees. Exceeding vacation dates is determined by last class attended before vacation and first class attended after vacation.

ADMISSION OF STUDENTS

Application for admission should be made as soon as possible before the beginning of the school year. No new student should come without having first corresponded with the registrar. Blanks for application are obtainable from the registrar of the College, to whom all applications and inquiries should be addressed.

Students wishing to transfer from other institutions must present a statement of honorable dismissal from the college last attended. All students become subject to all rules and regulations of the institution when they enter the grounds, whether they have enrolled for classes or not.

REQUIREMENTS FOR ADMISSION

The work of the College is divided into two periods—the General Division and the Major Division. The purpose of the General Division is to complete as far as possible the general education of the student, acquainting him with the various fields of human knowledge and endeavor and giving him the command of tools needed for further work. In the second year of the General Division, students may take a limited number of courses leading to his field of concentration to be pursued in the Major Division. The purpose of the Major Division is to permit the student to concentrate his attention and work upon some limited field closely connected with his professional plans and interest.

A candidate for admission into the General Division of the College must have been graduated from an approved high school where his record of performance has been a creditable one. The grades for at least fifteen units of work, together with the recommendation of the principal, must be submitted as evidence on which the Admissions Committee will determine the creditable performance of work in high school. The units must show sufficient breadth of training from the fields of English, Mathematics, Science, Social Science, and Modern Languages to give evidence of the possibility of success in a liberal arts college. In special cases admission may be secured through examination.

Students planning to study for the Bachelor of Arts degree in Music should have had, in addition, the advantage of private lessons in some branch of music. If the lessons do not include piano, some knowledge of that instrument must be possessed by applicants. Upon entering the College, the student will be examined and advised as to the length of time probably necessary for completing requirements for graduation. The Kwalwasser-Dykema tests are used to determine musical aptitude.

GRADUATION

The College confers the Bachelor of Arts degree. The requirements for the Bachelor of Arts degree in fields other than music are the completion of the general requirements and the requirements in a field of concentration as stated in the following paragraphs:

General Requirements Precedent to Concentration

For admission to a course of study in a selected field of concentration the student must fulfill the following requirements:

(1) He must give evidence through examination of a grasp of such knowledge as can be secured in first year college courses in the three fields of Social Sciences, Natural Sciences, and Humanities.

(2) He must give evidence through examination of a grasp of such knowledge as can be secured in two second-year college courses to be selected from the fields of Humanities, Physical Sciences, Biological Sciences, and Social Sciences.

(3) He must give evidence of his ability to use the English language in a satisfactory manner. The training for this may be secured through the elementary courses in communication.

(4) He must have a reading knowledge of at least one foreign language—French, German, Russian, or Spanish. Training for this may be secured in the elementary language courses.

(5) He must show evidence of having such a grasp of mathematics as can be secured by the successful completion of a thorough course in elementary college mathematics.

(6) He must pursue successfully the courses designated as preparatory for his field of concentration.

(7) He must complete such work in Physical Education as can be secured in the courses numbered 101 and 102 in that department.

(8) The quality of the work done by the student must be such that the faculty will feel that he can pursue profitably work in a field of concentration.

Requirements in Field of Concentration

The student must meet the following requirements in his field of concentration:

(1) He must qualify for admission to a course of study in some selected field, to be known as his field of concentration, consisting either of a single department or a group of related departments. (For requirements to meet this condition see paragraph on General Requirement above.)

(2) He must pursue successfully a program of work arranged in consultation with his adviser and approved by the Dean. The program of study will consist ordinarily of a minimum of sixty semester hours of work, although upon recommendation of his adviser and approval of the Dean, a student may be allowed to pursue work not directly connected with any formal course as a substitute for a part of his course requirements.

In addition, a student will complete a specific piece of work called his project. This project will be chosen in consultation with the student's adviser and must receive the approval of the faculty in his field of concentration and the Dean of the College. This work may, upon recommendation of adviser and approval of the Dean, be used as a substitute for a part of the student's course requirements.

(3) He must take the Advanced Test in his major field of concentration and the Aptitude Test of the Graduate Record Examinations, and perform satisfactorily on an oral examination at which at least three faculty members are to be present. If his score on the Graduate Record Examinations is not satisfactory, he must complete successfully a written comprehensive examination of his major department.

TIME

The progress of the student is measured in terms of accomplishments rather than in terms of time. Ordinarily, two years will be required to qualify for admission into the student's field of concentration and two years for completion of this latter work. However, the length of either period may vary according to the preparation, ability, and application of the student.

REQUIREMENTS FOR THE DEGREE OF BACHELOR OF ARTS IN MUSIC

Classification in applied music courses leading to graduation is obtained by examination before the faculty of the department except in the senior year when the public recital is offered in lieu of private examinations. The candidate may be required to present his program before the faculty in advance of the public recital.

The examination should be taken on the Saturday preceding the last Saturday of the school year. Due to limited opportunities in some sections for thorough preparatory study, in addition to the increased academic requirements for music students, the period between entrance and graduation for such students will normally require five years.

Advanced classification will depend upon the results of the

faculty examination, the grades given by private teachers in applied music (piano, organ and voice) being not determinative, but merely indicative. Provisions are made for college students in the study of applied music without academic credit.

All students, regardless of their applied music emphasis, are required to pursue the courses in piano numbered 130M, 131M and 131MB. If the student's applied music emphasis is piano these courses must be satisfactorily completed in the first three years, otherwise the requirements must be completed the year prior to graduation.

The course in voice numbered 140M is required of all music majors.

The curriculum of the Music Department normally requires five years. Permission to complete the program in four years must be considered as a privilege granted by the music faculty, and not an automatic right of the student. Eligibility for the four year program will be determined by the following criteria:

(1) The student shall have completed three semesters of study with an overall average of "B".

(2) The student shall have attained a grade of "A" in his performing area by the third semester.

(3) Permission will be granted only by unanimous agreement of the music faculty.

(4) The student must maintain a "B" average throughout the four year period.

(5) The music faculty reserves the right to revoke its decision during the third year, or before, should the student fail to maintain the standards outlined.

Throughout the total music program, musicianship is stressed.

SCHOLARSHIP

As students in the general courses devote the major portion of their time to reading, checks are made by short quizzes throughout the term and term grades are handed in. The work is graded A, B, C, D, F. Grade A indicates work of exceptional merit; Grade B of good average; Grade C of average; Grade D poor but passing and Grade F unsatisfactory.

These grades, however, are primarily for the convenience of those students wishing to transfer to some other college before completing their course of study. The final criterion for the successful completion of general courses is the passing of comprehensive examinations normally taken at the end of the year, though available for students at other periods of the year listed in the academic calendar.

Students who fail to pass a comprehensive examination may be allowed to retake the examination if so recommended by the instructor in charge, otherwise they must repeat the course.

The same procedure as above is used in the courses in the student's field of concentration.

GRADUATION HONORS

For distinctive work in courses and in the examination in the field of concentration, the bachelor's degree with honors is conferred upon a candidate by vote of the faculty.

CLASSIFICATION

Until a student has qualified for admission into his field of concentration, he is classified as a general student. After he has been accepted into his field he is called a major student.

WITHDRAWAL

A student may be dropped by vote of the faculty when it is found that he does not possess sufficient ability for the work or that it is impossible for the College to develop in him any interest for the work.

Voluntary withdrawal is determined on the basis of request from parent or guardian of student with approval by the Dean of Instruction.

RESIDENCE

At least two full years of matriculation are required before the College will award the baccalaureate degree. This obtains especially in the case of transfer and "special" students.

COURSES OF STUDY

WORK LEADING TO STUDY IN A FIELD OF CONCENTRATION

(Normally the first two years)

Incoming students are examined carefully—not primarily for admission but for placement—and those found deficient in English and mathematics are required to pursue work in these subjects until satisfactory standards are reached.

The comprehensive examinations also afford a test of the student's ability to use English. Deficiency in this will fail a student as well as lack of grasp of subject matter.

During this period students carry the normal load of seventeen or eighteen hours of work per week.

COURSES FOR GENERAL REQUIREMENTS

First Year

General courses required of all students.

Communications
Humanities
Natural Sciences
Social Sciences
Mathematics
Physical Education

Communications will meet four hours per week; Physical Education, two; and the other courses three each.

Second Year

Courses required of all students majoring in the Natural Science Division

Mathematics
Inorganic Chemistry
Biology or Physics
German or French
Physical Education
An elective in Social Science or Humanities

Courses required of all Students majoring in Social Science or Humanities

Social Sciences
Humanities

Biology, Chemistry, or Physics
 French, German, Spanish, or Russian
 Physical Education

An elective in the major field

All courses except Physical Education, Biology, Chemistry and Physics, will meet three hours a week.

Any student may begin his study in his chosen field of concentration during his second year.

The Social Science and Humanities courses of the second year will be general courses.

Third Year

Continuation of work under the direction of Department of Specialization.

Fourth Year

Continuation of work under the direction of Department of Specialization.

A two semester hour course will be required of all seniors utilizing their total education experiences in building a consistent philosophy on the meaning of life.

ORGANIZATION OF COURSES OF STUDY

The course offerings of the College are organized in three fields: Humanities, Natural Sciences and Mathematics, and Social Sciences. Each field includes the subject area indicated below:

HUMANITIES

Art	Spanish
Communications	Philosophy
English	Music
French	Religion
German	Russian

NATURAL SCIENCES AND MATHEMATICS

Biology	Mathematics
Chemistry	Physics

SOCIAL SCIENCES

Economics	Physical Education, Health and Recreation
Education	Psychology
History	Sociology
Political Science	

Work is offered in the following major fields of concentration:

Biology	Mathematics—Physics
Chemistry	Modern Languages
Economics	Music
Elementary Education	Physical Education— Recreation
English	Psychology
History	Sociology
Mathematics	

THE HUMANITIES

Music. The equipment for work in music consists of four Steinway grand pianos, fourteen upright pianos, portable Victrolas, two modern two-manual Moller organs, one three-manual Kilgen organ, a library of two thousand volumes of music, many scores, records, and books on musical subjects.

Little Theatre. The laboratory for dramatic work is a frame structure known as the Workshop. It is equipped with a stage, space for storing scenery and costumes, a make-up room, a library of over two hundred plays, and equipment for work in lighting and construction. The Workshop provides seating space for an audience of approximately one hundred and fifty.

Modern Language. The laboratory for modern languages is well equipped for taking care of the needs of the student who desires to obtain a speaking knowledge of the language. Maps and wall charts illustrating various useful terminology form bases for class work. There are also two recording machines and numerous speech records, of French, Spanish, and German, as well as some records of typical folk music.

Fine Arts. A Workshop offering opportunities to students in handicrafts, painting, the plastic arts, and the graphic arts was opened in the fall of 1947. It is located in Sessions Hall. It contains two kilns and a potter's wheel for ceramics. There is an etching press for printing wood blocks, etchings, lithographs, and graphics. There are also easels, easel seats, and drawing boards for drawing, sketching and painting.

DESCRIPTION OF COURSES

General Division

GENERAL COURSES

101. First Year. This course presents basic characteristics of visual arts, literature, music, and the combined arts. By means of visual and auditory aids and reading, those characteristics are used to study developments and examples of the arts in western civilization from the classical Greek world to the present time. Attention is given to related social trends, with emphasis on current trends and cultural manifestations.

102. Second Year. Designed to deepen and extend explorations of first-year survey; four periods of equal length: (1) development

of student's needs in philosophy and religion, through discussions, lectures, and readings; (2) study and analysis of musical compositions to deepen student's appreciation in listening to music; (3) lectures, demonstrations, discussions, to create understanding and appreciation of major trends in painting, sculpture, prints, architecture, and handicrafts; reports and readings; (4) study of literary techniques and types to develop appreciation of relation of literature to philosophy, religion, and art in student's thinking. A Year Course.

COMMUNICATIONS

101C. First Year. A course in the skills of listening, speaking, reading, and writing, as they apply to many areas of a student's experience: general courses, use of the library, campus discussions, and individual contacts of both an oral and a written nature. Individual and group needs determined by diagnostic tests, personal conferences, consultation with other instructors and advisors, and observation in various classes. Student needs treated through classroom work, especially arranged small groups, and individual conferences, in order to develop the student throughout the first year and to provide skills for succeeding years. A Year Course.

102E. Practice in Writing. Adapted to the needs of individuals. Open to all who have satisfied requirements of 101C. First semester.

FOREIGN LANGUAGES

101F. Elementary French. A course designed to develop basic skills in pronunciation, aural comprehension, speaking and reading. Foundations of French grammar. A Year Course.

101G. Elementary German. A course organized to give students an elementary reading knowledge in German and the foundations of German grammar. A Year Course.

101R. Elementary Russian. A course designed to teach the student to speak, read and understand simple Russian. Elements of grammar. A Year Course.

101Sa. Elementary Spanish. A course designed to give students a reading knowledge of easier Spanish texts and the elements of Spanish grammar and conversation. A Year Course.

MUSIC

101M. Harmony, Sight and Ear Training, Dictation, and Keyboard Harmony. Written work using diatonic triads, dominant seventh chords and inversions, non-harmonic tones, and elementary modula-

tion dealing with the phrase, period, ternary and binary forms. Simple two-part rounds and canons. Introduction to music literature through discussion and hearing of works used for analysis. Keyboard application of techniques studied in written work. A Year Course.

104M. Harmony, Sight Singing, Harmonic Dictation, and Keyboard Harmony. A progression from the study of the harmonic and contrapuntal aspects of four-part harmonization using Bach chorales as models to exercises including simple two, three, and four-part harmonic counterpoint, part writing for voices and strings, and piano pieces in binary and ternary forms using late eighteenth and nineteenth century models. Continued expansion of harmonic vocabulary. Keyboard exercises including more difficult harmonization, modulation, improvisation on a given motif, and transposition. A Year Course.

130M. First Year in Piano. A course emphasizing (1) thumb, finger, wrist and arm technique, (2) legato, staccato, and portato touches, (3) how to study, (4) interpretation and style. Materials: all major and minor scales and arpeggios; Czerny Op. 299; Little Preludes and Two-Part Inventions of Bach; Sonatinas of Clementi, Kuhlau, Haydn; three to five compositions of Nineteenth Century composers selected to meet the needs of the individual, and to develop both musical insight and technical facility. A Year Course.

131M. Second Year in Piano. Further study of all major and harmonic minor scales in thirds, sixths, tenths, parallel, and contrary motion (Speed M.M.92); triads and inversions, and diminished and dominant seventh arpeggios; legato and staccato octaves. Performance of more difficult studies from Czerny Op. 299, Three-Part Inventions of Bach, a sonata of Mozart or Haydn, and selected compositions from Nineteenth Century masters. A Year Course.

131MB. Third Year in Piano. Review of all scales and arpeggios from previous years, with the addition of melodic minor and chromatic scales parallel, thirds, sixths, and tenths; dominant seventh arpeggios in inversions. Examination requirements for entrance into Major Division: all scales, arpeggios, octaves; two studies from Czerny Op. 740, an octave study (Doring, or other); a Prelude and Fugue from Bach's Well-Tempered Clavier; a movement from an early Beethoven sonata, a lyrical composition from the Romantic Period. A Year Course.

140M. First Year Voice. Correct position and poise of the body; a proper and definite breath control; a knowledge of vowels and consonants in their relation to the singing and speaking voice; drill in tone production resulting in a sustained and resonant tone of satisfactory quality and quantity; a demonstrable knowledge of a system of vocalizers involving all major and minor scales, simple arpeggios, and phrasing; songs of moderate difficulty sung with

correct intonation, time, tone quality, and interpretation. Use of Concone, Seiber, and Panofka. Twice a week for major study; once a week for minor study. Required of all Music Majors. A Year Course.

141, 141MB. Second and Third Year Voice. Continued drill in the technique of breathing, tone placing, and phrasing; art songs from the standard classics; selections from the opera and oratorio; language elective; use of Panofka, Concone, and Marchesi. Two lessons a week for major study; one a week for minor study. A Year Course.

150M. First Year Organ. Preparatory manual and pedal exercises; acquiring an organ legato for hands and feet; developing greater accuracy for note values and rhythms and coordination between hands and feet through materials taken from "Method of Organ Playing" by Gleason. Bach: Chorale Preludes for manuals; Chorale Preludes from the Little Organ Book; fugal compositions of moderate difficulty. Scales for Pedals in major and minor keys. Works by pre-Bach masters. Class recitals. A Year Course.

151M. Second Year Organ. Continuation of pedal exercises. Hymn playing. Bach: Chorale Preludes; Preludes and Fugues; slow movements of Trio Sonatas. Sonatas of Mendelssohn. Pieces suitable to the individual's ability chosen from works of Baroque, Romantic and modern masters. Appearance in class and student public recitals. A Year Course.

160M. Group Piano. A course in the simple exploration of the fundamentals of music at the keyboard for appreciation of the role of music in the education of the young child. Awareness of the uses of music in the school curriculum for all of the early age levels.

(1) As required of majors in Elementary Education; special emphasis on ways in which the regular classroom teacher may contribute to the musical experiences of children and foster their musical expression as part of the everyday activities of the curriculum. Ability to read and play melodies in the common keys; to harmonize simple melodies using the principal of chords; to improvise rhythmic patterns for the basic bodily movements as well as for free expression; to write from dictation simple melodies.

(2) As required of majors in Physical Education; special emphasis on playing accompaniments to singing games and dances, rhythmic interpretations of songs, stories, poems; ability to improvise on the principal chords in the rhythmic patterns of the fundamental bodily movements and of free bodily movement. A Year Course.

Major Division

ENGLISH

201E. The Drama. Brief study of dramatic development up to the time of Shakespeare, with intensive study of six plays of Shakespeare and more general study of eight other plays. One Semester.

202E. The Drama. Brief review of drama in 17th and 18th centuries and intensive study of nineteenth and twentieth century drama from Ibsen to the present day, including continental, English and American dramatists. One Semester.

240E. Contemporary Literature. A study of various types of literature in the present day, as needs of individual students indicate. One Semester.

241E. Creative Writing. Guidance in individual work in writing of any type. One Semester.

252E. American Literature. A critical and appreciative study of major American writers, with attention to backgrounds, tendencies, and movements in political and literary life in America. Two Semesters.

255E. Chaucer and his Age. A study of the major writings of Chaucer in their relation to the coming of the Renaissance in England; the author's indebtedness to earlier writers; his influence upon literary and linguistic developments in later times. One Semester.

256E. Literature from 1500-1650. A study of the nondramatic literature, in poetry and prose, of the period of Elizabeth and James I. Emphasis upon development of lyric poetry; works of Sidney, Spenser; English Bible and other great translations. One Semester.

257E. Milton and his Contemporaries. A study of the writings of Milton, emphasizing the poetical works, with some attention to the more important political and literary figures of his time. One Semester.

263E. Literature of the Eighteenth Century. A study of the chief neo-classic writers of poetry and prose, in their relation to the social trends of their time. One Semester.

264E. The Romantic Movement in Poetry. A study of the beginning of the Romantic Movement, and of the important poets in their relation to their time, and their influence upon later poets. One Semester.

267E. History of the English Novel. The genesis of the novel, contributions from foreign writers, eighteenth century, nineteenth century, romanticists and realists, contemporary novel. One Semester.

270E. Victorian Period. Study of poetry centered on works of Tennyson and Browning; and of nonfictional prose writers with emphasis upon Carlyle, Ruskin, Arnold, Huxley. One Semester.

FINE ARTS

211A. Introduction to Art. A course designed to combine certain aspects of studio work with the historical areas of art as they relate to cultural patterns of creative man in the universe. Emphasis on appreciation of the visual and minor arts with close examination of both through exhibition programs, lectures, discussions, demonstrations, field trips, and the use of various audio-visual aids. Critical evaluation of principles and practices in the art field emphasizing contemporary trends. First Semester.

214A. Color and Design. Theories of form, color, space, value, line, and texture will be studied. Emphasis will be placed upon study of the structure and the abstract design of nature forms. The prime purpose of this course will be to show that design is a discipline constituting a basic and integral part of all art form and organization. Second Semester.

215A. Graphic Arts Workshop. An examination of the fundamental principles governing the use of line, texture and color in various fine print media. The course incorporates problems intended to develop proficiency in the use of tools and materials: Emphasizing design for linoleum blocks, scratch board, wood cuts, lithography, serigraphy and etching. Second Semester.

216A. Ceramics Workshop I. This course is designed to introduce the student to the characteristics of clay and allow him at the same time to experiment with three dimensional form as it relates to the plastic arts. A knowledge of slab, coil, press, and template methods will be the main objective of the course yet the student will have a chance to examine the properties of local clays and slips, as well as the composition of glaze made in the Department. The student will also be allowed to experiment with various forms on the Potter's wheel and learn techniques of glazing and firing methods. First Semester.

217A. Ceramics Workshop II. A continuation of Ceramics Workshop I with an increase in the use of the potter's wheel. Learning simple mold making and experimenting with clays, glazes and slips. Second Semester.

219A. Drawing and Composition. Workshop media techniques and learning to compose a picture through a series of problems involving an exploration of value, color, space and texture. Various media shall be used with emphasis on developing the following studies: still life, figures and landscapes. First Semester.

223A. Creative Painting Workshop. Developing concepts of pictorial design in oil, tempera, water color, pastel, and encaustics with emphasis on the elements of design as they relate to particular subjects in landscape, still life and human figure compositions. Ex-

perimenting with various media in order to encourage the development of technique. Second Semester.

224A. Christian Art. This course is designed as a survey of Christian art beginning with the Early Christian church and continuing through modern times. Field trips and notebook are required. Second Semester.

225A. Art Education Workshop.

284E. Elementary school art which includes methods of teaching art on the elementary school level. Understanding creative activities of the child with emphasis on guidance, motivation, materials, and tools. Exploration of various art media to develop creativity in handling materials applicable to adoption in the elementary school programs. First Semester.

FOREIGN LANGUAGES

201F. Intermediate French. Work begun in first year continued. More detailed knowledge of grammar and idioms stressed and conversational skill developed. Reading knowledge extended to more difficult texts. Prerequisite: completion of 101F or, subject to entrance examination, elementary knowledge of French acquired otherwise. A Year Course.

202F. Advanced French. Continues work of second year, extending reading and conversational skills. Study of French composition with the aim of developing writing skill. Records and periodicals used in classroom work. Prerequisite: 201F, or by examination. A Year Course.

226F. French Literature. Survey of French cultural history and literary trends until the 19th century.

232F. Contemporary French Literature. This course begins from the 19th century and extends to the present. Reading and discussion of selected masterpieces of the 19th and 20th century. A survey of prominent authors and literary movements with translation of representative texts. Emphasis on their significance to contemporary thought.

201G. Intermediate German. Continues work begun in the first year with more detailed discussion of grammar and basic German conversation, and development of a fair reading knowledge of scientific German. Prerequisite: 101G. A Year Course.

201R. Intermediate Russian. Work begun in first year continued. Emphasis is placed on the ability to read and understand Russian texts. Training in conversation. Prerequisite: 101R. A Year Course.

201Sa. Intermediate Spanish. First semester: Rapid review of grammar; composition and advanced conversation. Second sem-

ester: Survey of Spanish and Spanish-American literature with interpretation and analysis of selected literary masterpieces. Prerequisite: 101Sa or examination. A Year Course.

MUSIC

201M. Harmony and Counterpoint, Sight Singing and Ear Training, Harmonic Dictation, and Keyboard Harmony. Continuation of the study of chromatic harmony. Continued exercises in counterpoint and the writing of two and three-part inventions. Writing in more expanded forms using modulatory transitions. Analysis of representative works. Familiarization with the brass, woodwind, and percussion instruments. Keyboard practice including score reading, transposition, and use of new chords and devices studied. A Year Course.

202M. Counterpoint. Introduction to sixteenth century vocal counterpoint. Continuation of harmonic counterpoint including invertible counterpoint, canon, the invention, and fugue exposition. A Year Course.

207M. History of Music. A year course. First Term: Primitive music—the cultures of early civilization: Ancient Egypt, Assyrian, Hebrew, India, China, Greek, and Roman; early Christian music; development of musical notation. Second Term: The Renaissance including the Italian, English, and Netherlands schools. The Baroque, with the evolution of the opera. Culmination of the polyphonic style in Bach and Handel. Third Term: A survey of music of the Classic, Romantic, Impressionist, and Modern Schools. A Year Course.

213M. Elementary School Music Methods. A course designed to acquaint the student with the philosophies underlying the most recent approved methods of presenting music as a series of meaningful experiences in the life of the child from kindergarten through sixth grade; and to guide the student in developing effective techniques and procedures for their implementation through singing, intelligent listening, rhythms, reading and creative work. Emphasis placed on developing desirable personal attributes within the prospective teacher. Prerequisite 241E. Second Semester.

214M. Secondary School Music Methods. A course designed to acquaint the student with the most recent and approved procedures for organizing and effectively directing the music curricula of the junior and senior high schools in terms of the needs and interests of the students they serve. Attention given to the planning and teaching of general and elective courses at each level; to music for public performance; to the adolescent voice; and to a knowledge and understanding of adolescence as a stage of human development. Prerequisites 241E and 213M. First Semester.

215M. Directed Observation and Student Teaching in the Elementary School. Criteria for good observation and recording of both

group and individual child behavior established and related to the basic educational problem of interpreting and constructively using observations. Later student teaching in the elementary school under the supervision of the critic teacher. Prerequisite 213M. First Semester.

216M. Conducting. This course teaches the technique of the baton and emphasizes the use of conducting for school music purposes. Acquaintance is made with the symphony orchestra; its instruments, seating plans, instrumentation, etc. Prerequisites: 213M and 214M. Second Semester.

218M. Directed Observation and Teaching in the Secondary School. Provision for a variety of supervised experiences in recording adolescent behavior in school situations, designed to develop skill in observation, followed by teaching, under supervision of the critic teacher, on both secondary school levels. Prerequisite 214M. Second Semester.

219M, 220M. Musical Form and Analysis. A study of the structure and aesthetic content of music; review of harmonic material with its fundamental and practical application; study of cadences and modulations in relation to form; two- and three-part form with analysis of compositions by Bach, Handel, Beethoven, Haydn, Mozart, Schubert, Schumann, Brahms; classic and romantic suites; the sonata form with analysis of its employment in sonatas, symphonies, and chamber music; variation and rondo forms. First and Second Semesters.

230M. Fourth Year in Piano. Emphasis is placed upon building the student's repertoire from the standard piano literature of the various stylistic periods. Technical study is confined to a few scale, arpeggio, and trill exercises, Chopin Etudes, and problems taken from pieces. A Year Course.

231M. Fifth Year in Piano. Technical study similar to that of fourth year. A public recital exhibiting proficiency in interpreting the music of the important periods and styles is required. The program should be planned around a significant composition of Bach, a sonata of Beethoven, lyrical and dramatic pieces from the Romantic Period, and Impressionistic and/or contemporary compositions. A Year Course.

240M. Third Year Voice. Further drill in vocal technique; songs of an advanced grade from classic and modern composers; appearances in public recitals; language elective. Two lessons a week for major study; one a week for minor study. A Year Course.

241M. Fourth Year Voice. An extensive repertoire from the best song literature; senior recital including an aria, a group of modern songs. Two lessons a week for major study; one a week for minor

study. A Year Course.

250M. Third Year Organ. Exercises of increased difficulty. Hymn tunes and anthems. Bach: Chorale Preludes; Preludes, Toccatas, and Fugues; Trio Sonatas. Compositions by Franck. Selections from the symphonies and sonatas of Romantic and modern masters, pieces by Baroque, Romantic and modern masters. Appearances in class and student public recitals. A Year Course.

251M. Fourth Year Organ. Bach: Trio Sonatas; Preludes, Toccatas, and Fugues. Hymn playing. Anthems and choruses from oratorios. Franck Chorales. Masterworks of all periods. Public recital. A Year Course.

260M. Music Appreciation. A course designed to give an appreciation of the various forms and styles of music as well as an insight into the components of music, through a brief study of instrumentation as it applies to tone color, of the function of rhythm, of melody and harmony, and of correlation of music to the other arts. Presentation of music and the composers in the context of the social and cultural forces present in their period. Emphasis placed upon listening to records and radio broadcasts. Second Semester.

262M. Piano Materials. A practical course dealing with the piano, its history, composers, literature, and problems: a continuation of keyboard harmony, with emphasis upon sight reading ensemble, improvisation and playing by ear. A Year Course.

PHILOSOPHY

240P. Introduction to Philosophy. A course designed to introduce the student to the basic problems and issues of philosophy. First Semester.

251P. Ethics. A survey of the major schools of ethics with special emphasis on Christian ethics. First Semester.

254P. Political and Social Philosophies of Our Day. An analysis of the various competing political and social philosophies. Second Semester.

255P. Philosophy of Religion. A historical survey of the great problems in the philosophy of religion. A Year Course.

RELIGION

249R. Introduction to Biblical Literature. An analysis of the Bible divided into the various types of literature with emphasis on the religious ideas contained therein. First Semester.

252R. Contemporary Christianity. A survey of the development of the modern Christian church and its problems. Second Semester.

253R. World Religions. An intensive survey of the main religions of the world. Second Semester.

275R. Seminar in Special Religious Topics. A course for upper-classmen who have had other courses in the fields of philosophy and religion. First or Second Semesters.

THE NATURAL SCIENCES AND MATHEMATICS LABORATORIES AND APPARATUS

Biology. The laboratories for the biological sciences occupy the northern half of the first floor of Silsby. They are equipped with various types of standard apparatus, such as, microscopes, microprojectors, microtomes, incubators, sterilizer, refrigerator, colorimeter and aquaria. The lecture rooms are also located on the first floor of Silsby Hall. These contain many charts, models, skeletons and other items of equipment that facilitate the learning process.

Chemistry. The laboratories for chemistry occupy the northern half of the second floor of Silsby Hall. They are equipped to serve adequately the laboratory instruction in the courses offered. The desks are equipped with water, gas, and current. The balance room is fitted with analytical balances of the required precision for routine analysis. Apparatus for conductometric and colorimetric work, constant temperature ovens, improved heating apparatus, and stirrers are available for advanced experimentation.

Physics. The laboratories for physics are located on the second floor of Silsby Hall. They are equipped with sufficient apparatus to perform all the experiments connected with the courses offered in physics. There are several pieces of apparatus for advanced work. These include Kater's Pendulum, spectrometers, spectroscopes, and other pieces in electricity and heat. Apparatus for demonstrations in each branch is adequate. The laboratory has a large number of the normal accessories of a laboratory.

DESCRIPTION OF COURSES

General Division

GENERAL COURSES

101. First Year Course. The course is designed to meet the needs of prospective non-science and science majors. The content gives a survey of the general principles and contents of Natural Sciences and their diverse applications. The first semester is devoted to a study of the universe, solar system, climate and weather, atomic-molecular hypothesis, matter, energy changes in chemical reactions, the Periodic Law, a study of atoms and isotopes, atomic structure, electron distribution, valence, oxygen, solutions, principles of mechanics, principles of heat. The second semester includes a study of an introduction to the biological sciences, life on earth, a survey

of the principles of biology, a study of cells, tissues, and systems of living things, and laboratory techniques. A Year Course.

101M. Fundamentals of Mathematics. (First Semester.) The fundamental operations, linear equations of one or two unknowns, exponents, radicals, factoring, fractions, quadratic equations, written problems and some geometric problems in area and volume, and simultaneous equations.

(Second Semester.) A concept of real numbers, sets, functions, and graphs, continuation of quadratic, determinates, mathematical induction, the binominal theorem, progressions, synthetic division. Trig.: the function and relations of all angles, identities, the solution of right triangles, oblique triangle, angular measurements (radians), the laws of $(a+B)$, $(a-B)$, $2a$, $\frac{a}{2}$ and identities. A Year Course.

102B. General Biology. A course which presents an over-view of the living world and basic principles by which it is governed. Two 1-hour lecture periods and two 2-hour laboratory periods per week. A Year Course.

102P. General Physics. An introduction to the fundamentals of mechanics, wave motion, thermodynamics, electricity and magnetism, light, and topics in modern physics. Prerequisite or Corequisite: 104-105M. A Year Course.

102M. Introduction to Logic. Elementary logic, both of propositions and classes, is studied. One Semester.

103C. Inorganic Chemistry and Qualitative Analysis. A course dealing with the chemistry of the metallic elements and their compounds, as well as with the elementary principles of analytical chemistry. Two 1-hour lectures, two 2-hour laboratory periods per week. A Year Course.

103M. Introduction to Mathematical Analysis. Elements of naive set theory, cardinal numbers, relations and functions as subsets of cartesian product sets; equivalence relations emphasized; introduction to abstract number systems and their properties, with special emphasis on the real number system. Second Semester.

104M. & 105M. Analytic Geometry and Differential and Integral Calculus. A systematic study of analytic geometry and of the differentiation and integration of algebraic and transcendental functions, and of the geometric and physical applications of the calculus. Prerequisite 101M or its equivalent. A Year Course.

Major Division BIOLOGY

220B. Invertebrate Zoology. A unit consisting of laboratory work supplemented by lecture-demonstrations and recitations dealing

with the comparative anatomy, development, and phylogeny of the lower and higher invertebrate groups. Two 1-hour lecture periods and two 2-hour laboratory periods per week. First Semester.

222B. Comparative Anatomy of Vertebrates. A unit involving the structure, physiology, and relationships of vertebrate animals. In the laboratory a number of representative types are dissected as a premedical requisite. Two 1-hour lecture periods and two 2-hour laboratory periods per week. First Semester.

223B. Genetics. A lecture-discussion course which treats the important facts and principles of heredity as they relate to plants, animals and man. First Semester.

224B. Comparative Vertebrate Embryology. A unit devoted to the study of the development stages of the fish, frog, chick, and mammal. Two 1-hour lecture periods and two 2-hour laboratory periods per week. First Semester.

225B. Histology and Microtechnique. A study of the microscopic structure of vertebrate tissues and organs including laboratory practice in the preparation of histological slides. Two 1-hour lecture periods and two 2-hour laboratory periods per week. Second Semester.

226B. Botany. A course dealing with the basic facts and concepts of plant life. Plant morphology, physiology, ecology and evolution are some phases of the subject treated. Two 1-hour lecture periods and two 2-hour laboratory periods per week. Second Semester.

228B. General Bacteriology. A course devoted to the study of bacteria and to problems concerning the relation of bacteria to health, industry and everyday living. Two 1-hour lecture periods and two 2-hour laboratory periods per week. First Semester.

231B. General Physiology. A course consisting of the study of facts and principles involved in the dynamic functioning of protoplasm and protoplasmic systems. Prerequisite: General college chemistry and organic chemistry. Organic chemistry may be taken simultaneously with this course. Two 1-hour lecture periods and two 2-hour laboratory periods per week. First Semester.

232B. Vertebrate Physiology. A study of the functions and functional interrelationships of the organs and organ systems of animals, in particular vertebrates and man. Designed to present the principles and methods of physiology both to students of biology and to others who are interested in human physiology. Two 1-hour lecture periods and two 2-hour laboratory periods per week. Second Semester.

233B. Biochemistry. A course which treats the chemical composition of living matter and the mechanism of biochemical reactions.

Two 1-hour lecture periods and two 2-hour laboratory periods per week. Second Semester.

CHEMISTRY

206C. Organic Chemistry. A course dealing with the general principles of organic chemistry as illustrated by preparations and study of typical representatives of the aliphatic, carbocyclic and heterocyclic series. Two 1-hour lectures and two 2-hour laboratory periods per week. A two semester course. Prerequisite: NS 103C or its equivalent.

209C. Physical Chemistry. Advanced study of states of matter, colligative properties of matter, thermochemistry, photochemistry, and chemical kinetics. Two 1-hour lectures and two 2-hour laboratories per week. Prerequisites: Quantitative Analysis, two years of college mathematics, General Physics. A Year Course.

211C. Topics in Chemistry. Original laboratory work based on work recorded in the literature. Description of work to be prepared in thesis form. Two 1-hour lecture-discussion periods, two 2-hour laboratory or library periods per week. Prerequisite: classification as Chemistry Major, senior year. First Semester.

216C. Quantitative Analysis. Analysis by gravimetric, volumetric, and colorimetric methods. Study of the solid state, pH, and organic precipitants. Two 1-hour lecture, two 2-hour laboratories per week. Prerequisite: Qualitative Analysis or consent of instructor. First Semester.

MATHEMATICS

203M. Advanced Calculus. (First Semester.) Elementary vector analysis, elementary topological structure of point sets, sequences; Bolzano-Weierstrass Theorem and Heine-Borel Theorem; functions of several real variables, partial derivatives, multiple and iterated integrals, line and surface integrals; theorems of Green and Stokes.

(Second Semester.) Infinite Series and sequences, uniform convergence with applications to existence theorems (esp. for differential equations); Fourier series, and orthogonal functions; introductions to complex function theory. Prerequisites 104M and 105M. A Year Course.

205M. Differential Equations. A study of methods of integrating ordinary differential equations, and their applications to problems in geometry and physics. Prerequisites 104M and 105M. First Semester.

206M. Modern Higher Algebra. An introduction to groups, rings, fields, polynomial domains, vector spaces, matrices, and linear transformations. A Year Course.

208M. Modern Higher Geometry. Synthetic treatment of a selected set of topics in modern geometry. One Semester.

230M. Scientific Method. A seminar on scientific method. Two Semesters.

PHYSICS

201P. Geometrical and Physical Optics. A brief study of geometrical optics; a more detailed study of physical optics including wave motion, interference, diffraction, electromagnetic nature of light, spectra, polarization, quantum optics, and other topics. Prerequisites: 102P, 104-105M. One Semester.

202P. Heat and Thermodynamics. A study of the fundamental ideas of temperature, work, internal energy, heat, reversibility, and entropy, kinetic theory of gases—primarily applied to ideal gases, but with some application to chemical, electric, magnetic, and other systems. Prerequisites: 102P, 104-105M. One Semester.

203P. Elementary Modern Physics. A course including a review of classical physics, a study of the principles of special relativity and quantum theories, atomic and nuclear structure. Prerequisites: 102P, 104-105M. One Semester.

204P. Sound Waves and Acoustics. A course designed to cover the elementary principles of wave motion, objective sound, and acoustics. Second Semester.

205P-206P. Electricity and Magnetism. A study of electrostatic charge, field, potential, and energy; dielectrics and capacitance; current electricity and direct current circuits; steady magnetism, electromagnetic induction; transient and alternating current circuit analysis. Maxwell's equations. Prerequisites or corequisites: 102P, 203M. A Year Course.

207P. Mechanics. A review of basic concepts of mechanics; a study of the laws of mechanics and of gravitation, the conservation laws, rigid bodies and fluids, wave motion, kinetic theory of gases. Introduction to Lagrange's and Hamilton's equations; vector algebra and vector calculus used. Prerequisites: 102P, 104-105M. One Semester.

THE SOCIAL SCIENCES

Education. The public schools of Talladega are used as laboratories for students working in education. Occasionally schools in other parts of the country are used.

Physical Education. The Callanan Union Building contains a gymnasium completely equipped for classes in basketball, volleyball, badminton, shuffleboard and other indoor activities. The swimming pool is located on the sub-floor. The pool is opened for classes during the week and recreational swimming on week-ends and holidays.

DESCRIPTION OF COURSES

General Division

GENERAL COURSES

101. First-Year General Course. Ancient and Modern Civilizations: A thorough study of the ancient civilizations of Egypt, Babylonia, Persia, Greece, Rome, India, China, Hebrews, etc. with particular emphasis on their achievements in literature, arts, science, philosophy, architecture and religion; and on the causes of the rise and fall of these ancient civilizations. This course also is aimed at familiarizing the student with contemporary western civilizations including their cultural, scientific, technological, industrial, economic, and other accomplishments. A Year Course.

102. Second-Year General Course. This course under the title "*America and the World*" deals with American social, political and economic institutions. It places emphasis upon contending ideologies, that of the free world and that of the communist world.

In this course are included basic sociologic, political and economic problems, giving general informations about: man and society, individual and environment, economic dynamic and social change, economy and government, labor and capital, state and society, individual rights and responsibilities, democracy and dictatorship, international relations and institutions.

Emphasis is given to both, theory and practice.

101P. Physical Education. A required course for first year students. A Year Course.

- A. Girls: The activities consist of Volleyball, Basketball, Swimming, Dance and Body Mechanics, Archery, and Tennis.
- B. Boys: The activities consist of Touch Football, Tumbling and Gymnastics, Swimming, Track and Field.

102P. Physical Education. A required course for second year students. A Year Course.

- A. Girls: The activities consist of Swimming, Badminton, Dance, Tennis, and Archery.
- B. Boys: The activities consist of Tennis, Volleyball, Badminton, Boxing and Wrestling, and Softball.

101Ps. Introduction to General Psychology. An introduction to the major areas, concepts, and methods used in modern psychology. Applications made in simple experiments and exercises. First Semester.

132Ps. Marriage and Personality. A study of the problems involved in marriage with special emphasis laid upon the importance of an adjusted personality for a happy marriage. Use of films, workbook, class reports. Second Semester.

133Ps. Mental Hygiene. Introduction to the broad area of maintaining mental health in the individual. Special interest in the problems of the healthy or normal person. Second Semester.

Major Division

HISTORY

202H. Political History of Modern Europe. A study of the political development of modern Europe with a careful analysis of the economic, intellectual, moral, political, and social conditions. One Semester.

214H. United States History.—I & II. A study of the political, cultural, economic, and social growth of the United States. Two Semesters.

216H. Seminar in United States History. A study of the Negro in the Reconstruction Period. Prerequisite: 214H or consent of instructor. One Semester.

228H. History of England. A study of the economic, cultural, political, and social growth of England and the British commonwealth. One Semester.

230H. History of the Far East. A study of the civilization of the Far East and its relationship to western civilization. Prerequisite: 202H. One Semester.

232H. The French Revolution. A study of the causes, character, and significance of the French Revolution, in the light of conditions that led to it, and in comparison with other revolutions. Lectures, discussions, reports. One Semester.

245H. Latin American History. A study of the economic, political, social, religious and intellectual development of Latin America from its discovery and conquest to the present. One Semester.

246H. History of Contemporary Africa. A study of the history of Africa, with emphasis on the development of autonomous states; as well as the economic, cultural, social, and political aspects of African life. One Semester.

POLITICAL SCIENCE

204Sc. Principles of Political Science. This is a basic course in political science which introduces to the student methodology, characteristics, principles and problems of political science. Also attention is directed to the study of the relationship of political science to other subjects of social sciences, and the general principles and fundamental concepts of government and state. One Semester.

206Sc. United States Government. A comprehensive study of national, state, local and city governments in the United States. The study of the national government includes the origin of the system of government, the salient features of the Federal Constitution, citizenship, civil rights, suffrage and election, and the organization and functions of the Congress, Executive and Judiciary. As to the state, local and city governments, attention is directed to the study of the role of the state government in the Federal system, and the organization, functions, and policies of the state, local and city governments, especially in Alabama. Prerequisites: 214H and 202H. One Semester.

207Sc. International Relations. An analytical inquiry into the major factors determining international relations. Emphasis is placed on possible effect of foreign policies pursued by the major powers on the stability of the world situation, on current international issues, and on the United Nations' efforts to establish world peace. One Semester.

PHYSICAL EDUCATION AND HEALTH

248P. Introduction to Physical Education. The course is designed to give the student professional orientation into the field of physical education from the historical and sociological point of view. One Semester.

200P. Techniques of Recreational Sports. A course that teaches the student skills in recreational sports. One Semester.

201P. Physical Education Methods for the Elementary School. A study of the organization and administration of physical education for elementary schools. One Semester.

203P, 204P. Sports Officiating and Coaching. A study of the Coaching and Officiating of team and individual sports. Prerequisites: 101P, 102P, 200P. First and Second Semesters.

212He. School Health Education. The purpose of this course is to acquaint students with the broad general nature of health problems in schools. Its goal is to develop health consciousness among students to as great extent as possible. First Semester.

230P. Tests and Measurements in Physical Education. The theory of measurement in physical education, the selection and administration of appropriate tests, and the interpretation of their results by fundamental statistical procedures. First Semester.

231P. History and Principles of Physical Education. A course designed to provide for the student a historical approach to physical education and to acquaint him with the philosophies that have influenced educational practices from primitive days to the modern era. First Semester.

232P. Administration of Health and Physical Education. A study of the philosophy and policies in the administration of a health and physical education program. Prerequisites: 231P, 241P, 246P. One Semester.

234P. Swimming and Life Saving. A study of techniques in swimming instruction and life saving. One Semester.

235P. Recreation Leadership. Theory and practice in leadership of recreational activities. Principles in planning, conducting and evaluating recreation programs in recreation agencies. One Semester.

241P. Teaching of Health Education. The course provides the student with information on health needs of the child, home, school and community and suggests how these needs may point the direction of a health program. Prerequisite 212He. First Semester.

242P. Corrective Physical Education. A study of the prevention and correction of body mechanic disorders, with a view towards planning an adapted physical education program. Prerequisites: S.S. 270E, N.S. 222B, N.S. 232B. Second Semester.

243P. First Aid. Practical application of techniques of first aid. Second Semester.

244P. Rhythmic Techniques. A comprehensive study of techniques of dance education. Prerequisites: 101P, 102P. One Semester.

246P. Specific Methods in the Teaching of Physical Education. The course presents a wide variety of basic teaching techniques appropriate for use in the secondary schools. Prerequisites: 230P, 231P, 241E, 243E. First Semester.

247P. Practice Teaching in Physical Education. Student teacher program under the supervision of critic teacher. Second Semester.

PSYCHOLOGY

225Ps. Foundations of Psychology: Contemporary Theories. This course is intended to be an intensive study of basic concepts and explanatory devices as revealed in the contemporary systems and theories of psychology. Areas covered include: perception, learning, thinking, motivation, and emotion. First Semester.

226Ps. Foundations of Psychology: History. A study of psychology based on an historical view, showing how past concepts of explanation have been changed and reworked into modern psychology. Prerequisite: 101 Ps.

231aPs. Introduction to Clinical Psychology. A course designed to acquaint undergraduates with the area of Clinical Psychology—its problems and explanations of dealing with the mentally ill. Prerequisite: 101Ps.

231bPs. Introduction to Abnormal Psychology. A course designed to introduce the concepts of normality and abnormality and to explore the various mental illnesses in our society. Prerequisite: 101Ps. Second Semester.

235Ps. Experimental Psychology. Elementary experimental study in such areas as reaction time, aesthetic judgment, learning, and motivation. Between 12 and 15 experiments. Knowledge of statistics essential. Prerequisite: 101Ps.

236Ps. Counseling. A study of contemporary methods in counseling and their application at various educational levels. Prerequisite: 101 Ps. First Semester.

237Ps. Theories of Personality. A systematic study of the various theories of personality which are of recent and contemporary origin. Emphasis is put upon application of these theories to one's own personality. Second Semester.

239Ps. Experimental Social Psychology. Theoretical and experimental study of the major problems and issues in social psychology. Prerequisite: 101Ps. Second Semester.

240Ps. Test and Measurements. A study of the special methods and tests used in Psychology. Prerequisite: 101Ps. and a course in Statistics. First Semester.

241Ps. Seminar in Special Topics in Psychology. A course designed to explore more deeply some one area in Psychology, such as learning, motivation. Prerequisite: Introduction to General Psychology and one advanced course in Psychology. One Semester.

SOCIOLOGY

244S. Contemporary Social Trends. Trends in various American social institutions. First Semester.

250S. Social Differentiation. Descriptions and theories of class, caste, and ethnic structure. Second Semester.

251S. Development of Sociological Thought. History of Sociology beginning with Comte and ending with contemporary schools. Second Semester.

252S. The Community and the Small Group. Through the study of the small group to the analysis of the community. First Semester.

260S. Readings in Sociology. Review reading on major sociological concepts. (Only for Sociology Seniors.) Second Semester.

261S. Methods of Sociological Research. Interview, scaling, sampling and other methods. First Semester.

264S. Introduction to Sociology. A basic introductory sociology course. First Semester.

265S. Sociology of Public Opinion and Political Institutions. Theory and research in public opinion and mass communication media. Prerequisite: 250s. First Semester.

266S. Population. Theory and research methods in community and population studies. Prerequisite: Statistics.

267S. Sociology of Family. Comparison of contemporary theories on family and case analysis.

268S. Social Psychology. Study of motivation, perception, collective and criminal behavior as influenced by groups. First Semester.

270S. Seminar in Sociology. Research, reports, and discussion of special problems in sociology. Second Semester.

ECONOMICS

220Ec. Intermediate Economic Theory. A study of pricing and output determination, with an analysis of cost, wages and profits, under the conditions of perfect, and imperfect competition. Second Semester.

223Ec. Labor Economics and Problems. Capital, labor, and law in the United States. American trade unions, their policy practice, and structure with reference to the European scene and the international labor movement. First Semester.

226Ec. Economic Principles and Problems. Elementary economic study of production, distribution, rent, interest, income, wages, monetary and fiscal policy, current economic problems, and laws. First Semester.

227Ec. International Economics. Development in international, commercial and financial theory and policy, with regard to policy and position of the United States. Second Semester.

228Ec. Economics of Marketing and Consumption. Principles and practices. A study of the function, nature, structure and problems, in relationship to price and cost, competition and laws, prosperity and depression, cooperative and consumer organizations. Second Semester.

229Ec. Land Economics. Man, land, and natural resources, appropriation, utilization, and distribution, in relation to agricultural policy, technological change, and economic geography. Second Semester.

230Ec. Elementary Accounting. An introduction to the principles underlying modern bookkeeping and accounting procedures. Second Semester.

231Ec. Elementary Statistics. The nature and limitation of statistics. Source, data and presentations of data. Statistical analysis, induction and tests of statistical hypothesis. First Semester.

245Ec. Monetary and Fiscal Policy. Money, credit and banking, incomes and prices, investment and employment, stability and prosperity. Integration of monetary policy with fiscal and general economic policies. Second Semester.

250Ec. Seminar in Economics. Reading, reports and research on special economic problems, for economic majors. Second Semester.

252Ec. Economic Doctrines and Systems. Development of economic doctrines and systems through history. Comparative analysis of capitalism, socialism and communism, with emphasis upon their differences in theory and practice. First Semester.

EDUCATION

GENERAL

240E. History and Principles of Education. The course deals with the development of educational theory and practices from the earliest times to the present. Prerequisite: SS101Ps. First Semester.

SECONDARY

241E. Educational Psychology. A study of the psychological contributions to the problems of education. Special attention is devoted to psychology of learning, acquisition of skill, transfer of training, individual differences, extent, and treatment. Prerequisite: SS101Ps. First Semester 3 SH.

242E. Psychology of Methods in High School Teaching. Emphasis is laid on the study of psychological principles involved in methods

of instruction of high school subjects. The course covers also applications to problems of teaching and learning, critical analysis of the theories of traditional and contemporary methods of teaching as they applied to different areas of the curriculum. Prerequisite: SS241E. Second Semester 3 SH.

243E. Principles and Practices of Secondary Education. The course is designed to give general understanding of the objectives and practices of secondary education in the fields of organization, administration, and supervision. Prerequisites: SS240E & 241E. Second Semester 3 SH.

245E. Tests and Measurements. A study of methods of construction, criteria of evaluation of tests used in secondary schools. The use of statistical methods in measuring test results and the application of such results to school purposes are stressed. Prerequisite: SS241E. Second Semester 3 SH.

246E. Specific Methods Applied in Teaching High School Subjects. Courses in specific methods and materials of teaching on the secondary level in English, Social Sciences, Foreign Languages, Mathematics, and Natural Sciences. Prerequisite: SS242E. First Semester 3 SH.

247E. (A) Practice Teaching in Secondary Schools. Student teaching in local high schools under the supervision of critic teachers. Prerequisites: SS242E & SS246E. First Semester 5 SH.

247E. (B) Practice Teaching in Secondary Schools. This is a continuation of Student Teaching program in local high schools under the supervision of critic teachers. Prerequisites: SS242E & SS246E. Second Semester 5 SH.

ELEMENTARY

270E. Child Psychology. Emphasis on the physical, emotional, social and mental growth of the child from infancy to puberty, with an application of this knowledge to dealing with children in the elementary school. Offers training leading to competency in the area of human growth and development of children. Prerequisite: SS101Ps. Second Semester 3 SH.

271E. Curriculum. A critical study of the organization, construction and administration of the elementary curriculum in the light of modern educational principles and objectives; overview of the subjects now included in the curriculum and the forces that cause them: the construction of units and other curriculum materials. First Semester 3 SH.

273E. Principles of Teaching in the Elementary Schools. A course in methods and materials in the elementary school designed for students who have had the equivalent of Psychology 101. Must be

taken along with Education 294-5, Student Teaching. First Semester 3 SH.

276E. Teaching the Social Studies in the Elementary School. This course considers the educational values of the social studies and ways and means of integrating history, geography, civics, and the development of pupils appropriate emotional and thought reactions to social problems and issues. First Semester 2 SH.

277E. Elements of Human and Social Geography. This course is designed to acquaint the student and public school teacher with the relationship of earth's features to man's activities. The effects of geography on the customs, economics, social and political adjustments of individuals on the world's six continents. Second Semester 2 SH.

280E. Tests and Measurements in the Elementary School. Offers training in administering, scoring, processing, as well as statistical interpretation of the results of standard tests used in elementary schools; also training is offered in the construction of objectives tests. Prerequisite: SS101Ps. Second Semester 3 SH.

284E. Elementary School Arts. See Hum. 225A.

285E. Children's Literature. A study of children's literature with a comprehensive survey of folklore, poetry, fiction, and non-fiction prose, of interest to children at various age levels. Students may do research at the level in which they are most interested—primary, intermediate or upper elementary grades. Second Semester 2 SH.

286E. Elementary School Music Methods. A course designed to acquaint the student with the philosophies underlying the most recent approved methods of presenting music as a series of meaningful experiences in the life of the child from kindergarten through sixth grade; and to guide the student in developing effective techniques and procedures for their implementation through singing, intelligent listening, rhythms, reading and creative work. Emphasis placed on developing desirable personal attributes within the prospective teacher. Prerequisite: SS241E. (Identical with Hum. 213M.) Second Semester 3 SH.

290E. Teaching of Language Arts in the Elementary School. A consideration of modern trends in teaching the language arts using as tools of communication reading, spelling, literature, composition and writing. Deals with the training in both the subject matter and methods of teaching the language arts subjects. First Semester 2 SH.

291E. Teaching of Arithmetic in Elementary Schools. This course is designed to give the teacher of arithmetic knowledge of history of numbers and the number process as well as a thorough mastery of

the facts themselves and of the learning process involved. First Semester 2 SH.

292E. Science for Children. A general survey of the higher animal and plant groups. Designed for elementary education majors. Local flora and fauna examined. Special emphasis given on collecting and preparing plant and animal materials centered around an activity program for children of elementary grades. Second Semester 2 SH.

294 & 295E. Directed Observation and Student Teaching in the Elementary School. A two part course consisting of directed observation and participation in instruction in elementary grades. Open only to seniors. It proposes to offer situations which the student will meet only in actual work, and give him benefit of skilled and experienced teachers' solution of school problems. Conferences for integrating school activities in the light of the observation and parallel readings are held frequently. First and Second Semester 10 SH.

INTRADIVISIONAL AND INTERDIVISIONAL COURSE

SS301. The Individual and Life. An integrating course required of all seniors. The purpose is to help the senior student think through the meaning of life in order that he may commit himself to its highest fulfillment. Toward this end, special emphasis will be placed upon interpreting the values of our Christian and Democratic heritage. First Semester.

1964-65 SCHOLARS

Hillard White Scholar
Sandra Daniel

William Savery Scholar
Cheryl Jones

Presser Foundation Scholar
Shirlene Hoke

Catherine Waddell Scholar
Henry Sanders

DeForest Scholars

Gene Armstrong	Herbert Sands
Johnnie Ann Brown	Joyce Hill
Viola Calhoun	Shirlene Hoke
Marilyn Ferguson	Roberta C. Jones
William Gordon	Marion Mosley

Andrews Scholars

Sandra Darville	Joy Lawe
Mitchell Davis, Jr.	Joretha McCall
Carolyn Fludd	Roger Miller
Nathaniel Greene	Beverly Odom
Quinten Gresham	John Peasant
Willie Hammonds	Farris Shorter
James Hartsfield	Angelean Smith
Jeannette Holston	Carolyn Walden
Dale Jackson	Kenneth Washington
	Stephen Womack

Sumner Scholars

Samuel Adams	Jesse Henerson
Mary Bodie	Roberta J. Jones
Audrey Christler	Helen Smith
Paul Cole	William Upshaw
Mitchell Dasher, Jr.	Effie Wilkerson

Alumni Scholars

Martha Anderson	Dianne Hill
Nick Curry	Gleevia Washington
Shirley Daniels	Virginia Woolfork
Chrysandra Gantt	

GRADUATING CLASS OF 1964

Carolyn Greene Bacon	Clarence Sebron Hall
Juanita Bailey	Frances Marie Harris
Leonard Edward Barongo	Lillian Tureman Horton
Robert Rhone Beasley	Sherman Andrew James
Sandra Doretha Bethel	Albert Johnson
Gwendolyn Vandelia Bozeman	Elisha Henry Jones, III
Louise Jacquelyn Brinson	Mary Clinton Jones
Majorie Patricia Brooks	Mary Jean Kennedy
*Carolyn Cadette Butler	Willie Virginia Lambert
Carolyn Elaine Butler	Laverne Delores Latsou
Ronnie Honore Byers	Margaret Ann Turner Latten
Mildred Louise Byrd	James Alexander Lawler
Brenda Ellyn Calhoun	Marye Victoria Major
Eleanor Calhoun	Jacqueline Luise Malone
Janice Singleton Carter	Loretta Mingo
William Alvin Caynon, Jr.	Lorna Dean Pace
Louise Farrel Cobb	Robert Nathaniel Perry, III
Dorothy Ann Whatley Cole	Mattye Belle Ross
John Eddie Cole, Jr.	Vivian Eleanor Russell
Smith Elden Counts	JoAnn Smith
Blanche Juanita Craig	Ruby LaVerne Scott
Neal Darby	Gloria Jeanette Taylor
Juanita Dees	Lottie Mae Turner
Annie Doris Doyle	Gwendolyn Lee Veale
Marilyn Anita Williams Drake	*Mamie Lou White
Ella Pearl Dudley	Napoleon White
Lena Nell Elston	John Edward Williams
Sandra Ann Fox	Frankie Jean Wilson
Dora Cecile Gaines	Gwendolyn Woods
Alfonso Grace, Jr.	William Lawrence Woods
Emma Ophelia Hunley Gresham	Doretha Elmyra Wynn
	Mary Burnette Yelling

*With honors.

AWARDS

The Armstrong Award for Creative Ability
Myrna Anderson

The Buell Gordon Gallagher Awards

Johnnie Ann Brown \$30.

William Gordon \$30.

Gene Armstrong \$30.

The Avery Speech Awards

Roberta J. Jones \$10

Victoria Major \$5.

Art Awards In Drawing and Painting

Marilyn Ferguson

Gilbert Bottoms Award

Sandra Daniel

Whiton Writing Award

Blanche Craig \$10

Kenneth Washington \$5.

Hamilton-Weaver Award

Viola Calhoun

Joyce Hill

VISITING SPEAKERS AND ARTISTS

1964

1. Mr. Thomas Williams and Mr. Bruce Reeves, Peace Corps, Washington, D. C.
2. Reverend B. Elton Cox, Field Representative, Congress of Racial Equality, High Point, North Carolina.
3. Dr. Myron W. Fowell, Associate Minister, Massachusetts Conference, United Church of Christ, Boston, Massachusetts.
4. Dr. Dean Noble, New York University, New York, New York.
5. Mrs. Julia Brogden Purnell, Honoral Supreme Basileus, Alpha Kappa Alpha Sorority, Inc.
6. Barnard College Student Exchange students, New York, New York.
7. Reverend Andrew J. Young, Field Representative, Southern Christian Leadership Conference, Atlanta, Georgia.
8. President Howard F. Schomer, Chicago Theological Seminary, Chicago, Illinois.
9. Reverend Oliver W. Holmes, Associate Director, Georgia Council on Human Relations, Atlanta, Georgia.
10. Reverend Andrew M. Spaulding, Professor of Theology and Ethics, Hood Theological Seminary, Salisbury, North Carolina.
11. Rabbi Israel J. Gerber, Temple Beth El, Charlotte, North Carolina.
12. National Opera Company.
13. Mrs. Jean Whittlet, Associate in Programming, National Y.W.C.A., New York, New York.
14. University of Colorado students on tour of south.
15. Dr. Carl E. Martenson, First Congregational Church, Port Huron, Michigan.
16. McHenry Boatwight, Baritone.
17. President Benjamin F. Mays, Morehouse College, Atlanta, Georgia.
18. Mitchell-Ruff Jazz Trio.
19. Dr. Lionel Newsome, Professor of Sociology, Morehouse College, Atlanta, Georgia.

20. President Paul McCanahan, Assuit College, Assuit, Egypt.
21. His Excellency Mr. Apollo K. Kironde, Ambassador to the United Nations from Uganda.
22. Mrs. Barbara S. Darden, Monroe High School, Albany, Georgia.
23. Dr. Carleton Lec, Professor of Philosophy and Religion, Central State College, Xenia, Ohio.
24. Honorable Arthur Naftalin, Mayor of Minneapolis, Minnesota.
25. Reverend Joseph H. Evans, Church of the Good Shepherd, Chicago, Illinois.
26. Mr. Robert J. Hengstebeck, Petroleum Institute, Whiting, Indiana.
27. Mr. James Bender, Personnel Representative, Federal Internal Revenue Service, Birmingham, Alabama.
28. Mrs. Carmel Carrington Marr, Political and Legal Advisor to the United States Mission to the United Nations, New York, New York.
29. Dean Charles B. Copher, Academic Dean, Interdenominational Theological Center, Atlanta, Georgia.
30. Reverend James E. Ray, McKinley Memorial Community Church, Champaign, Illinois.
31. Mr. Guy Carawan, folk singer, St. John's Island, South Carolina.
32. Dr. Broadus N. Butler, Assistant to the Commissioner, Higher Education Projects, United States Office of Education, Washington, D. C.
33. Miss R. Elizabeth Johns, editorial secretary, Council for Christian Social Action, United Church of Christ, New York, New York.
34. Reverend Andrew L. Cooper, First Congregational Church, Anniston, Alabama.
35. Mr. Rufus Porter and Mr. Tom Honeycut, Personnel and Laser Research, Redstone Arsenal, Huntsville, Alabama.
36. Mr. Charles E. McKinney, Peace Corps Volunteer from Eastern Brazil.

LITTLE THEATRE PRODUCTIONS**1963-64**

The Cave Dwellers	William Saroyan
The Silver Box	John Galsworthy
The World of Robert Frost	Norman Corwin

ART EXHIBITS**1963-64**

1. PRINTS by Tamami Shima & Hans Bhalla
2. DRAWINGS and GOUACHES by Leo Robinson
3. PRINTS by American Masters and COLLAGES
by Yetta Bornstein
4. PAINTINGS by Mohan Samant
5. Annual Show of Student Work, Talladega College, Talladega,
Alabama.

Also, a small exhibition of our student's work was shown at the New Jersey Women's Committee of the United Negro College Fund meeting during April, 1964.

SUMMARY OF ENROLLMENT**1964-65**

	<i>Male</i>	<i>Female</i>	<i>Total</i>
Major Division	45	88	133
General Division	99	153	252
	<hr/>	<hr/>	<hr/>
	144	241	385

ENROLLMENT BY STATES

Alabama	142
Arkansas	1
California	3
Connecticut	1
Florida	104
Georgia	61
Illinois	4
Indiana	2
Iowa	2
Louisiana	5
Michigan	2
Mississippi	2
New Jersey	3
New York	7
North Carolina	10
Ohio	2
Pennsylvania	3
South Carolina	17
Tennessee	2
Texas	4
Virginia	6

FOREIGN

Malawi	1
South Africa	1

FACULTY AND STAFF

FACULTY

- Herman H. Long *President*
A.B., Talladega College; M.A., Hartford Seminary Foundation; Ph.D., University of Michigan.
- Sylvester B. Dorsey *Professor of Biology*
B.S., Alabama State College; M.S., Atlanta University; Ed.D., Columbia University.
- Jacqueline Given *Professor of Mathematics*
B.S., University of Colorado; M.S., Colorado College.
- Frank Goodall Harrison *Professor of Voice*
Mus.B., Howard University. Additional Study, Institute of Musical Art, Julliard School of Music, Columbia University, Union Theological Seminary.
- James Oliver Hopson *Professor of English*
A.B., Lincoln University, Pennsylvania; A.M., University of Pittsburgh; Ph.D., University of Pittsburgh. Additional Study, University of Chicago.
- Arnold E. Look *Professor of Communications*
A.B., McMaster University; Th.B., Southern Seminary; B.D., M.Th., Crozer Seminary; M.A., University of Pennsylvania; Ph.D., Yale University.
- Everett W. MacNair *Professor of Religion*
B.D., Chicago Theological Seminary; Ph.D., Columbia University.
- Cohen T. Simpson *Professor of Chemistry*
A.B., Talladega College; M.S., State University of Iowa; Ph.D., State University of Iowa. Additional Study, University of Chicago, University of Michigan.
- K. C. Wang *Professor of Social Sciences*
B.A., Fuk-Tau University of China; Ph.D., Johns Hopkins University.
- Albert C. Anonye *Associate Professor of History*
B.A., Central State College; M.A., Boston University; B.D., Howard University. Additional study, American University.
- James Roland Braithwaite *Associate Professor of Music*
Mus.B., Boston University; A.M., Boston University. Additional Study, Boston University.
- Leslie Dominits *Associate Professor of Modern Languages*
B.S., German Gymnasium of Timisoara; M.A., University of Cluj and School of Journalism of Buenos Aires; Ph.D., University of Budapest and University of Kolozsvar. Additional study, Columbia University and Mississippi State University.
- Woodrow W. Dorsey *Associate Professor of Chemistry*
A.B., Clark College; M.S., Atlanta University. Additional study, Saint Louis University.

- Renette Berthelle Echols *Associate Professor of Physics*
B.S., Clark College, Georgia; M.S., Howard University. Additional study, The Catholic University of America, University of Texas, and University of Michigan.
- Thomas Jefferson Flagg *Associate Professor of Music*
Mus.B., Howard University; Professional Diploma, Julliard School of Music; A.M., Teachers College, Columbia University.
- *Edward E. Harris *Associate Professor of Social Sciences*
B.S., Lincoln University; M.A., State University of Iowa; Ph.D., State University of Iowa.
- Margaret L. Montgomery *Associate Professor of Humanities*
Litt.B., Grove City College; A.M., Northwestern University. Additional Study, University of Chicago, Northwestern University, New York University, Columbia University.
- Robert L. Smothers *Associate Professor of Education*
A.B., Morehouse College; M.A., Atlanta University; Ph.D., State University of Iowa. Additional study, Indiana University.
- William Spinner *Associate Professor of Modern Languages*
M.S., University of Lwow, Poland. Additional study, Institute of Foreign Languages, University of Lwow.
- Muriel Elaine Taylor *Associate Professor of Biology*
B.S., Virginia State College; A.M., Columbia University. Additional Study, Columbia University and Northwestern University.
- Radoje Vukcevic *Associate Professor of Economics*
M.L., University of Belgrade; Ph.D., University of Berlin; Additional Study, London School of Economics.
- James W. Adams *Assistant Professor of Physical Education*
B.S., Indiana Central College; M.S., Indiana University.
- Hans R. Bhalla *Assistant Professor of Art*
A.B., Talladega College; M.F.A. Cranbrook Academy of Art.
- Charles G. Campbell, Jr. *Assistant Professor of Physical Education*
B.S., M.S., North Carolina College.
- Prem S. Kahlon *Assistant Professor of Biology*
B.S., Government Agricultural College; M.S., Louisiana State University; Ph.D., Louisiana State University.
- N. K. Lakshmanan *Assistant Professor of Biology*
B.Sc., Madras Christian College of India; M.Sc., Bhavan's College of Bombay, India; F. S. B., India. Additional study, Jamal Mohamed College of India, Central Botanical Laboratory, India; Annamalai University, India; Central Indian Medicinal Plants Organization, India; Brooklyn College, New York.
- Consuela L. Moorehead *Assistant Professor of Music*
A.B., Fisk University; Mus.M., Northwestern University.

*Part of year.

- Julian L. Scott *Registrar*
A.B., Talladega College. Additional Study, University of Chicago, Columbia University, and Fisk University.
- Oscar P. Cadet *Instructor of Mathematics*
M.A., Ecola Normal Superior-Haiti.
- *Catherine Hurst *Instructor of Communications*
A.B., Talladega College; M.A., Atlanta University.
- Eula Cooper Cokely *Instructor of Education*
A.B., Talladega College; A.M., The Putney Graduate School; M.A., University of Wisconsin.
- Ben Jobe *Instructor of Physical Education
and Head Basketball Coach*
B.A., Fisk University; M.S., Tennessee State University. Additional study, University of Tennessee.
- †Albert Solomon *Instructor of Sociology*
B.S., New York City College; M.S., University of Wisconsin.
- †Anita Solomon *Instructor of Psychology*
B.A., The College of Wooster; M.S., University of Wisconsin.
- Lawrence Spellens *Instructor of Communications and English*
A.B., University of Wisconsin; M.A., New York University.

*On leave.

†Part of year.

ADMINISTRATIVE STAFF

Herman H. Long, A.B., M.A., Ph.D.
President

Wesley Hotchkiss, A.B., B.D., Ph.D.
Secretary

Howard Spragg, D.D.
Treasurer

Cohen T. Simpson, A.B., M.S., Ph.D.
Dean of Instruction

Everett W. MacNair, A.B., B.D., Ph.D.
Dean of the Chapel

Fred D. Montgomery
Business Manager

Julian Licetti Scott, A.B.
Registrar and Director of Admissions

Mable G. Carter, B.S.
Assistant Librarian

John H. McCray, A.B.
Director of Public and Alumni Relations

M. M. Smothers, B.S., M.S.
Counselor of Women

James W. Adams, B.S., M.S.
Adviser to Men Students

Clarence Dortch, Jr., B.S.
Assistant Business Manager

Elva N. Jones
Matron

Osie S. Hines
Matron

Paralee J. Webb, B.S.
Matron

Theresa Parker, R.N.
College Nurse

A. F. Toole, M.D.
Physician

John Calhoun White, D.D.S.
Dentist

Lillian T. Horton, A.B.
Assistant in the Library

Maxine Herring
Secretary to Director of Public Relations

Enolia Ellis, B.S.
Secretary to the Registrar

Peggy W. Dortch, B.S.
Secretary to the Deans

*Mittie E. Tucker
Secretary to the President

Ira Turner, Jr., B.S.
Assistant in the Business Office and College Union Building

Elizabeth M. Petty
Assistant in the Business Office

Hural Johnson, B.S.
Superintendent of Buildings and Grounds

Charles Moore
Assistant in Plant Operation

Bonnie Rembert
Assistant in the Business Office

Julia Campbell
Secretary in Administrative Offices

GENERAL ALUMNI ASSOCIATION OFFICERS

Daniel Kennon '32 *General President*
John Wilhite '25 *Vice President*
Charlton Hamilton '28 *Mid-Southern Vice President*
John T. Brunson '44 *Gulf Coast Vice President*
Henry Drewry '48 *Eastern Vice President*
Willard Ransom '36 *Mid-Western Vice President*
William Cokely '50 *Treasurer*

*Part of year.

BOARD OF TRUSTEES

Term of Office Expires in 1965

Wesley A. Hotchkiss, *Secretary* New York, New York
Warren Brothers Chicago, Illinois
Jane Ellen McAllister Vicksburg, Mississippi
Herman H. Long Talladega, Alabama

Term of Office Expires in 1966

Donald P. Cottrell, *Chairman* Columbus, Ohio
Arthur D. Gray Chicago, Illinois
Arthur D. Shores, *Vice Chairman* Birmingham, Alabama
Annie L. Tucker New York, New York

Term of Office Expires in 1967

Charles Mitchell Bliss New York, New York
Allan Knight Chalmers New York, N. Y.
George B. Hastings Grant, Nebraska
Howard Spragg, *Treasurer* New York, New York

Emeritii

George W. Crawford New Haven, Connecticut

Executive Committee: Charles Mitchell Bliss, *Chairman*; Wesley A. Hotchkiss, *Secretary*; Allan Knight Chalmers, Arthur D. Shores, Howard Spragg

Committee on Educational Policy: Jane Ellen McAllister, *Chairman*; Allan Knight Chalmers, Donald P. Cottrell, Wesley A. Hotchkiss, Annie L. Tucker

Committee on Finance and Investments: Howard Spragg, *Chairman*; Charles Mitchell Bliss, Warren Brothers, George B. Hastings

Committee on Buildings and Grounds: Arthur D. Shores, *Chairman*; Charles Mitchell Bliss, Warren Brothers, Wesley A. Hotchkiss, Howard Spragg

The President of the college is *ex officio* member of all committees of the Board.

INDEX

	<i>Page</i>		<i>Page</i>
Activities, College	11	Faculty Staff	64
Admission Requirements:		Financial Aid	13
General Division	22	Foreign Language,	
Major Division	23	Courses in	31, 36
Administrative Staff	67	Grades, System of	25
Aid, Student	13	Graduating Class of 1964	58
Alumni Officers	68	Graduation, Requirements for	23
Arts, Courses	35	Health	10
Awards:		Historical Sketch of College	7
Listing of	17	Hisotry, Courses in	47
Winners of, 1964	59	Humanities, Field of	30
Biological Sciences	42	Infirmary	10
Buildings and Grounds	8	Library	9
Calendar, Academic	5	Little Theatre	11
Chemistry, Courses in	42, 44	Mathematics, Courses in	42, 44
Choir	11	Music, Courses in	31, 37
Committees, Trustee	69	Natural Science, Field of	41
Communications	31	Organ, Courses in	33
Council, College	12	Philosophy, Courses in	39
Course of Study, Organiza-		Physical Education and Health,	
tion of	27	Courses in	46, 48, 49
Degrees, Requirements for:		Physics, Courses in	45
Bachelor of Arts	23	Piano, Courses in	32, 33, 38
Bachelor of Arts in Music	24	Political Science, Courses in	48
Divisions of the College	27	Psychology, Courses in	50
Dormitories	10	Publications	11
Room Deposits for	13	Religion, Courses in	39
Economics, Courses in	51	Scholars, List of 1963-64	56
Education, Courses in	52	Scholarship Funds	15
English, Courses in	33	Social Science, Field of	46
Expenses:		Sociology, Courses in	50
General	19	Sports	11
Special Fees:		Student Senate	12
Art	20	Table of Contents	3
Exceeding Vacation Dates	21	Trustees	69
Late Registration	21	Voice, Courses in	32, 38
Music	21		
Science	20		